



TEST REPORT

Reference No. : SZ2022100623-1E

Date : Dec. 14, 2022

Page No.: 1 of 17

Client : Paul Stricker SA | Paul Stricker CZ s.r.o | Reda a.s.

Address : N.I. Murtede, It5 - 3060-372 Murtede – Portugal | Hviezdoslavova 55d, 627 00 Brno - Czech Republic

The following merchandise was (were) submitted and identified by the client as:

Name of Product : Knives

Test Model : 93872, 93891, 94032

Model May Cover : /

Main Material: /

Supplier: /

Buyer: /

Produced to : Paul Stricker SA

Manufacturer: 9290|0031861

Sample Received : Oct. 17, 2022

Test Period : Oct. 17, 2022 - Oct. 27, 2022

Test Specification and Conclusion:

Please refer to next page

Prepared By :

David Chen
Testing Engineer

Reviewed By :

Dora Cheng
Reporter Supervisor

Issued By :



Ada Wang
Lab Manager



SZ2022100623-1E

STQ Testing Services Co., Ltd.

Add.: Building 1, 15 Yinzhu Road, High-new district, Suzhou, China 215129

Tel.: +86/(0)512 67991866

Fax: +86/(0)512 87661802

Web: www.stq-cert.com

Technical service: TS@stq-cert.com

Customer service: CS@stq-cert.com



TEST REPORT

Reference No. : SZ2022100623-1E

Date : Dec. 14, 2022

Page No.: 2 of 17

Test Request		Conclusion
1.	Phthalate content according to EC Regulation 1907/2006, REACH Annex XVII (entry 51&52)	PASS
2.	Lead (Pb) content according to EC Regulation 1907/2006, REACH Annex XVII (entry 63)	PASS
3.	Cadmium (Cd) content according to EC Regulation 1907/2006, REACH Annex XVII (entry 23)	PASS
4.	Polycyclic Aromatic Hydrocarbons (PAHs) contents according to EC Regulation 1907/2006, (EU) No 1272/2013 Amending PAHs of REACH Annex XVII (entry 50)	PASS
5.	Organotin content according to EC Regulation 1907/2006, REACH Annex XVII (entry 20)	PASS
6.	AZO contents according to EC Regulation 1907/2006, REACH Annex XVII (entry 43)	PASS
7.	Pentachlorophenol (PCP) content according to Regulation (EU) 2019/1021 of the European Parliament and of the Council of 20 June 2019 on persistent organic pollutants and its subsequent amendments Directive.	PASS
8.	Formaldehyde Release according to Safety of Toys, EN71-9:2005+ A1:2007-Organic Chemical Compounds	PASS
9.	Nickel Release content according to EC Regulation 1907/2006, REACH Annex XVII (entry 27)	PASS
Technical Guide on Metals and Alloys used in food contact materials and articles of the 1 st edition in 2013, German Food, Articles of Daily Use and Feed Code of September 1, 2005 (LFGB), Section 30,31 and BfR recommendation, General Requirement (Article 3) in EU Regulation No. 1935/2004		
10.	Sensorial examination odour and taste test for full article	PASS
11.	Extractable Heavy Metals for Metal	PASS
French Décret 92-631 and French recommendation DGCCRF 2004-64 and its amendment Décret no 2007-766 du 10 mai 2007, Methodological Document Rules relating to metals and alloys intended to come into contact with foodstuffs, DM/4B/COM/001(2016), General Requirement (Article 3) in EU Regulation No. 1935/2004		
12.	Chromium, Tantalum, Niobium, Zirconium, Molybdenum, Titanium, Aluminum and Copper contents for Stainless steel (base material)	PASS
Italian Decree of Ministry of Health of 21/03/1973 and its amendment Ministry Decree No.195 of 6 August 2015, Ministry Decree No.72 of 09 May 2019, General Requirement (Article 3) in EU Regulation No. 1935/2004		
13.	Overall migration test for stainless steel	PASS
14.	Extractable Nickel, chromium and Manganese for stainless steel	PASS
15.	Composition analysis for stainless steel	PASS

***** To be continued *****

STQ Testing Services Co., Ltd.

Add.: Building 1, 15 Yinzhong Road, High-new district, Suzhou, China 215129

Tel.: +86/(0)512 67991866

Fax: +86/(0)512 87661802

Web: www.stq-cert.com

Technical service: TS@stq-cert.comCustomer service: CS@stq-cert.com

TEST RESULTS:

1. Phthalates Content

Test Method: With reference to EN 14372-2004, Analysis was performed by GC-MS.

(1-1) For plasticized materials (including toys and childcare articles)

Test Item(s)	Unit	MDL	Test Results	Limited Value*
			1#	
Dibutyl Phthalate((DBP)	%	0.005	N.D.	---
Benzylbutyl Phthalate(BBP)		0.005	N.D.	---
Di-(2-ethylhexyl)Phthalate(DEHP)		0.005	N.D.	---
Di-isobutyl phthalate (DIBP)		0.005	N.D.	---
Total (DBP+BBP+DEHP+DIBP)		---	< 0.020	< 0.1

(1-2) For toys and childcare articles that can be mouthed

Test Item(s)	Unit	MDL	Test Results	Limited Value*
			1#	
Di-iso-nonylphthalate(DINP)	%	0.005	N.D.	---
Di-n-octylphthalate(DNOP)		0.005	N.D.	---
Di-iso-decylphthalate(DIDP)		0.005	N.D.	---
Total (DINP+DNOP+DIDP)		---	< 0.015	< 0.1

Remark: *The Limited value is based on EC Regulation 1907/2006, REACH Annex XVII (entry 51&52)

2. Lead(Pb) Content

Test Method: With reference to EPA 3052-1996 & EPA 6010D-2018, Analysis was performed by ICP-AES.

Test Item	MDL (mg/kg)	Test Results (mg/kg)				Limited Value** (mg/kg)
		1# [▲]	2# [▲]	3# [▲]	6# [▲]	
Lead(Pb)	10	N.D.	N.D.	N.D.	N.D.	500

***** To be continued *****

Test Item	MDL (mg/kg)	Test Results (mg/kg)		Limited Value** (mg/kg)
		4#	5# [▲]	
Lead(Pb)	10	N.D.	N.D.	500

Remark: **The Limited value is based on EC Regulation 1907/2006, REACH Annex XVII (entry 63).

3. Cadmium (Cd) Content

Test Method: With reference to EN 1122- 2001 Method B, Analysis was performed by ICP-AES.

Test Item(s)	MDL (mg/kg)	Test Results (mg/kg)	Limited Value*** (mg/kg)
		1#	
Cadmium (Cd)	10	N.D.	100

Remark: ***The Limited value is based on EC Regulation 1907/2006, REACH Annex XVII (entry 23).

4. PAHs Contents

Test Method: With reference to AfPS GS 2019:01 PAK, Analysis was performed by GC-MS.

Test Items	CAS No.	MDL (mg/kg)	Test Results (mg/kg)	Limited Value**** (mg/kg)	
			1#	Category I	Category II
Benzo[a]pyrene	50-32-8	0.1	N.D.	1	0.5
Benzo[e]pyrene	192-97-2	0.1	N.D.	1	0.5
Benzo[a]anthracene	56-55-3	0.1	N.D.	1	0.5
Chrysene	218-01-9	0.1	N.D.	1	0.5
Benzo[b]fluoranthene	205-99-2	0.1	N.D.	1	0.5
Benzo[j]fluoranthene	205-82-3	0.1	N.D.	1	0.5
Benzo[k]fluoranthene	207-08-9	0.1	N.D.	1	0.5
Dibenzo[a,h]anthracene	53-70-3	0.1	N.D.	1	0.5

Remark: ****The Limited value is based on (EU) No 1272/2013 Amending PAHS of REACH Annex XVII(entry 50).

LIMITS FOR PAH :

Parameter	Category I	Category II
PAHs	Such articles include amongst other: 1. Sport equipment such as bicycles, golf clubs, racquets 2. House-hold utensils, trolleys, walking frames 3. tools for domestic use 4. clothing, footwear, gloves and sportwear 5. watch-straps, wrist-bands, masks, head-bands	Toys, including activity toys, and childcare articles

STQ Testing Services Co., Ltd.

Add.: Building 1, 15 Yinzhu Road, High-new district, Suzhou, China 215129

Tel.:+86/(0)512 67991866

Fax: +86/(0)512 87661802

Web:www.stq-cert.com

Technical service: TS@stq-cert.com

Customer service: CS@stq-cert.com

5. AZO Contents

Test Method: With reference to ISO 17234-1:2015, Analysis was performed by GC-MS.

Test Items		MDL (mg/kg)	Test Results (mg/kg)	Limited Value***** (mg/kg)
CAS NO.	prohibitive aromatic amines		6#^	
92-67-1	4-Aminobiphenyl	5	N.D.	30
92-87-5	Benzidine	5	N.D.	30
95-69-2	4-Chloro-o-toluidine	5	N.D.	30
91-59-8	2-Naphthylamine	5	N.D.	30
97-56-3	O-Aminoazotoluene	5	N.D.	30
99-55-8	5-nitro-o-toluidine	5	N.D.	30
106-47-8	4-Chloroaniline	5	N.D.	30
615-05-4	4-methoxy-m-phenylenediamine	5	N.D.	30
101-77-9	4,4'-methylenedianiline	5	N.D.	30
91-94-1	3,3'-Dichlorobenzidine	5	N.D.	30
119-90-4	3,3'-Dimethoxybenzidine	5	N.D.	30
119-93-7	3,3'-Dimethylbenzidine	5	N.D.	30
838-88-0	4,4'-methylenedi-o-toluidine	5	N.D.	30
120-71-8	P-Cresidine	5	N.D.	30
101-14-4	4,4'-Methylene-bis-(2-Chloro-aniline)	5	N.D.	30
101-80-4	4,4'-oxydianiline	5	N.D.	30
139-65-1	4,4'-Thiodianiline	5	N.D.	30
95-53-4	O-Toluidine	5	N.D.	30
95-80-7	4-methyl-m-phenylenediamine	5	N.D.	30
137-17-7	2,4,5-Trimethylaniline	5	N.D.	30
60-09-03	4-Aminoazobenzene	5	N.D.	30
90-04-0	O-Anisidine	5	N.D.	30

Remark: *****The Limited value is based on EC Regulation 1907/2006, REACH Annex XVII (entry 43).

***** To be continued *****

6. Organotin Content

Test Method: With reference to DIN EN ISO 17353-2005, Analysis was performed by GC-MS.

Test Items	Unit	MDL	Test Results	Limited Value*****
			6# [▲]	
Diocetyl tin (DOT)	mg/kg	0.1	N.D.	1000
Dibutyl tin (DBT)	mg/kg	0.1	N.D.	1000
Tributyl tin (TBT)	mg/kg	0.1	N.D.	1000
Triphenyl tin (TphT)	mg/kg	0.1	N.D.	1000

Remark: ***** The Limited value is based on EC Regulation 1907/2006, REACH Annex XVII (entry 20)

7. Pentachlorophenol (PCP) Content

Test Method: Analysis was performed by GC-MS.

Test Item	MDL (mg/kg)	Test Results (mg/kg)		Limited Value***** (mg/kg)
		2#	3#	
Pentachlorophenol (PCP)	0.05	N.D.	N.D.	5

Remark: ***The Limited value is based on Regulation (EU) 2019/1021 of the European Parliament and of the Council of 20 June 2019 on persistent organic pollutants and its subsequent amendments Directive.

8. Formaldehyde Release

Test Method: With reference to EN 717-3-1996, Analysis was performed by UV-Vis.

Test Item	Moisture content (%)	MDL (mg/kg)	Test Results (mg/kg)	Limited Value [#] (mg/kg)
			2#	
Formaldehyde Release	10.39	10	N.D.	80

Test Item	Moisture content (%)	MDL (mg/kg)	Test Results (mg/kg)	Limited Value [#] (mg/kg)
			3#	
Formaldehyde Release	7.03	10	40	80

Remark: [#]The Limited value is based on EN71-9:2005+A1:2007-Organic Chemical Compounds-Requirements.

***** To be continued *****

STQ Testing Services Co., Ltd.

Add.: Building 1, 15 Yinzhu Road, High-new district, Suzhou, China 215129

Tel.: +86/(0)512 67991866

Fax: +86/(0)512 87661802

Web: www.stq-cert.com

Technical service: TS@stq-cert.com

Customer service: CS@stq-cert.com

9. Nickel Release Content

Test Method: With reference to EN1811:2011+ A1:2015 & EN12472:2020, Analysis was performed by ICP-AES.

Test Item(s)	Sample Area (cm ²)	Volume of Test Solution (mL)	MDL (µg/cm ² /week)	Test Results (µg/cm ² /week)			Limited Value ^{##} (µg/cm ² /week)
				4#-1	4#-2	4#-3	
Nickel Release	12.92	20	0.1	N.D.	N.D.	N.D.	0.5

Remark: ^{##}The Limited Value is based on EC Regulation 1907/2006, REACH Annex XVII(entry 27).

- Note :**
- 1) MDL = Method Detection Limit.
 - 2) N.D. = Not detected, less than MDL.
 - 3) “---” = Not Regulated.
 - 4) % = Percentage by weight.
 - 5) [▲]As the client required, the sample was tested in mixture.

10. Sensorial Examination Odour and Taste Test

Test Method: Sensory test with reference to DIN10955: 2004-06

- Test procedure:
1. Wash the sample with distilled water and dry it at room temperature;
 2. Total immersion by water and keep at 70°C for 2 hours;
 3. Cool to room temperature;
 4. Degust the taste and evaluate;
 5. Test the Blank as the steps 1~4.

Test Items	Result			Maximum Permissible Limit
	7#	8#	9#	
Sensorial examination odour (Point scale)	0	0	0	2.5
Sensorial examination taste (Point scale)	0	0	0	2.5

Scale evaluation:

- 0: No perceptible odour and taste
- 1: Odour and taste just perceptible (still difficult to define)
- 2: Moderate odour and taste
- 3: Moderately strong odour and taste
- 4: Strong odour and taste

***** To be continued *****

11. Extractable Heavy Metals

Test Method: Sample prepared with reference to Technical Guide on Metals and Alloys used in food contact materials and articles of the 1st edition in 2013 and by ICP-OES & ICP-MS

Test condition: 70°C, 2 hours with Citric acid (5 g/L)

Test sample No and description: 7# Silver stainless steel blade (SS2CR14)

Extractable Elements	The 1 st Result (mg/kg)	The 2 nd Result (mg/kg)	The 1 st + 2 nd Result (mg/kg)	7*Limit (mg/kg)	The 3rd Result (mg/kg)	Limit (mg/kg)
Silver (Ag)	N.D.	N.D.	N.D.	0.56	N.D.	0.08
Aluminium (Al)	N.D.	N.D.	N.D.	35	N.D.	5
Chromium (Cr)	N.D.	N.D.	N.D.	1.75	N.D.	0.250
Cobalt (Co)	N.D.	N.D.	N.D.	0.14	N.D.	0.02
Copper (Cu)	N.D.	N.D.	N.D.	28	N.D.	4
Iron (Fe)	1.28	0.28	1.56	280	0.18	40
Magnesium (Mg)	N.D.	N.D.	N.D.	---	N.D.	---
Manganese (Mn)	N.D.	N.D.	N.D.	12.6	N.D.	1.8
Molybdenum (Mo)	N.D.	N.D.	N.D.	0.84	N.D.	0.12
Nickel (Ni)	N.D.	N.D.	N.D.	0.98	N.D.	0.14
Tin (Sn)	N.D.	N.D.	N.D.	700	N.D.	100
Titanium (Ti)	N.D.	N.D.	N.D.	---	N.D.	---
Vanadium (V)	N.D.	N.D.	N.D.	0.07	N.D.	0.01
Zinc (Zn)	N.D.	N.D.	N.D.	35	N.D.	5
Antimony (Sb)	N.D.	N.D.	N.D.	0.28	N.D.	0.04
Arsenic (As)	N.D.	N.D.	N.D.	0.014	N.D.	0.002
Barium (Ba)	N.D.	N.D.	N.D.	8.4	N.D.	1.2
Beryllium (Be)	N.D.	N.D.	N.D.	0.07	N.D.	0.01
Cadmium (Cd)	N.D.	N.D.	N.D.	0.035	N.D.	0.005
Lead (Pb)	N.D.	N.D.	N.D.	0.07	N.D.	0.010
Lithium (Li)	N.D.	N.D.	N.D.	0.336	N.D.	0.048
Mercury (Hg)	N.D.	N.D.	N.D.	0.021	N.D.	0.003
Thallium (Tl)	N.D.	N.D.	N.D.	0.0007	N.D.	0.0001

***** To be continued *****

TEST REPORT

Reference No. : SZ2022100623-1E

Date : Dec. 14, 2022

Page No.: 9 of 17

Test sample No and description: 8# Silver stainless steel blade (SS2CR14)

Extractable Elements	The 1 st Result (mg/kg)	The 2 nd Result (mg/kg)	The 1 st + 2 nd Result (mg/kg)	7*Limit (mg/kg)	The 3rd Result (mg/kg)	Limit (mg/kg)
Silver (Ag)	N.D.	N.D.	N.D.	0.56	N.D.	0.08
Aluminium (Al)	N.D.	N.D.	N.D.	35	N.D.	5
Chromium (Cr)	N.D.	N.D.	N.D.	1.75	N.D.	0.250
Cobalt (Co)	N.D.	N.D.	N.D.	0.14	N.D.	0.02
Copper (Cu)	N.D.	N.D.	N.D.	28	N.D.	4
Iron (Fe)	0.98	0.28	1.26	280	0.23	40
Magnesium (Mg)	N.D.	N.D.	N.D.	---	N.D.	---
Manganese (Mn)	N.D.	N.D.	N.D.	12.6	N.D.	1.8
Molybdenum (Mo)	N.D.	N.D.	N.D.	0.84	N.D.	0.12
Nickel (Ni)	N.D.	N.D.	N.D.	0.98	N.D.	0.14
Tin (Sn)	N.D.	N.D.	N.D.	700	N.D.	100
Titanium (Ti)	N.D.	N.D.	N.D.	---	N.D.	---
Vanadium (V)	N.D.	N.D.	N.D.	0.07	N.D.	0.01
Zinc (Zn)	N.D.	N.D.	N.D.	35	N.D.	5
Antimony (Sb)	N.D.	N.D.	N.D.	0.28	N.D.	0.04
Arsenic (As)	N.D.	N.D.	N.D.	0.014	N.D.	0.002
Barium (Ba)	N.D.	N.D.	N.D.	8.4	N.D.	1.2
Beryllium (Be)	N.D.	N.D.	N.D.	0.07	N.D.	0.01
Cadmium (Cd)	N.D.	N.D.	N.D.	0.035	N.D.	0.005
Lead (Pb)	N.D.	N.D.	N.D.	0.07	N.D.	0.010
Lithium (Li)	N.D.	N.D.	N.D.	0.336	N.D.	0.048
Mercury (Hg)	N.D.	N.D.	N.D.	0.021	N.D.	0.003
Thallium (Tl)	N.D.	N.D.	N.D.	0.0007	N.D.	0.0001

***** To be continued *****

STQ Testing Services Co., Ltd.

Add.: Building 1, 15 Yinzhu Road, High-new district, Suzhou, China 215129

Tel.: +86/(0)512 67991866

Fax: +86/(0)512 87661802

Web: www.stq-cert.com

Technical service: TS@stq-cert.com

Customer service: CS@stq-cert.com

Test sample No and description: 9# Silver metal blade (SS3CR13)

Extractable Elements	The 1 st Result (mg/kg)	The 2 nd Result (mg/kg)	The 1 st + 2 nd Result (mg/kg)	7*Limit (mg/kg)	The 3rd Result (mg/kg)	Limit (mg/kg)
Silver (Ag)	N.D.	N.D.	N.D.	0.56	N.D.	0.08
Aluminium (Al)	N.D.	N.D.	N.D.	35	N.D.	5
Chromium (Cr)	N.D.	N.D.	N.D.	1.75	N.D.	0.250
Cobalt (Co)	N.D.	N.D.	N.D.	0.14	N.D.	0.02
Copper (Cu)	N.D.	N.D.	N.D.	28	N.D.	4
Iron (Fe)	1.88	0.40	2.28	280	0.43	40
Magnesium (Mg)	N.D.	N.D.	N.D.	---	N.D.	---
Manganese (Mn)	N.D.	N.D.	N.D.	12.6	N.D.	1.8
Molybdenum (Mo)	N.D.	N.D.	N.D.	0.84	N.D.	0.12
Nickel (Ni)	N.D.	N.D.	N.D.	0.98	N.D.	0.14
Tin (Sn)	N.D.	N.D.	N.D.	700	N.D.	100
Titanium (Ti)	N.D.	N.D.	N.D.	---	N.D.	---
Vanadium (V)	N.D.	N.D.	N.D.	0.07	N.D.	0.01
Zinc (Zn)	N.D.	N.D.	N.D.	35	N.D.	5
Antimony (Sb)	N.D.	N.D.	N.D.	0.28	N.D.	0.04
Arsenic (As)	N.D.	N.D.	N.D.	0.014	N.D.	0.002
Barium (Ba)	0.03	N.D.	0.03	8.4	N.D.	1.2
Beryllium (Be)	N.D.	N.D.	N.D.	0.07	N.D.	0.01
Cadmium (Cd)	N.D.	N.D.	N.D.	0.035	N.D.	0.005
Lead (Pb)	N.D.	N.D.	N.D.	0.07	N.D.	0.010
Lithium (Li)	N.D.	N.D.	N.D.	0.336	N.D.	0.048
Mercury (Hg)	N.D.	N.D.	N.D.	0.021	N.D.	0.003
Thallium (Tl)	N.D.	N.D.	N.D.	0.0007	N.D.	0.0001

***** To be continued *****

Remark:

1.The following table is the MDL of the Extractable Heavy Metals testing

Extractable Elements	MDL(mg/kg)	Extractable Elements	MDL(mg/kg)	Extractable Elements	MDL(mg/kg)
Silver (Ag)	0.01	Molybdenum (Mo)	0.01	Barium (Ba)	0.01
Aluminium (Al)	0.01	Nickel (Ni)	0.01	Beryllium (Be)	0.01
Chromium (Cr)	0.01	Tin (Sn)	0.01	Cadmium (Cd)	0.001
Cobalt (Co)	0.01	Titanium (Ti)	0.01	Lead (Pb)	0.001
Copper (Cu)	0.01	Vanadium (V)	0.01	Lithium (Li)	0.01
Iron (Fe)	0.01	Zinc (Zn)	0.01	Mercury (Hg)	0.001
Magnesium (Mg)	0.01	Antimony (Sb)	0.01	Thallium (Tl)	0.0001
Manganese (Mn)	0.01	Arsenic (As)	0.001	---	---

2. MDL = Method Detection Limit.

3. N.D.= Not detected, less than MDL.

4. The submitted sample/component is a repeated use article. The migration test was carried out three times on the same article. The sum of the results of the first and second tests should not exceed seven times the limit (Result 1st test + Result 2nd test <7* limit) and the Result 3rd should not exceed the limit.

12.Chromium, Tantalum, Niobium, Zirconium, Molybdenum, Titanium, Aluminum and Copper Contents.

Test Method: Acid digestion, followed by analysis using Inductively Coupled Argon Plasma Spectrometer.

Test Item	Unit	Results		Permissible Limit
		7#	8#	
Chromium content	%	13.44	13.89	Not less than 13
Tantalum content	%	<0.01	<0.01	Maximum 1
Niobium content	%	<0.01	<0.01	Maximum 1
Zirconium content	%	<0.01	<0.01	Maximum 1
Molybdenum content	%	0.01	0.01	Maximum 4
Titanium content	%	<0.01	<0.01	Maximum 4
Aluminum content	%	<0.01	<0.01	Maximum 4
Copper content	%	0.05	0.07	Maximum 4

Note: Detection limit of the instrument for above parameters is 100 ppm (0.01%) each

***** To be continued *****

13.Overall Migration Test

Test Method: With reference to EN1186-1:2002 for selection of conditions and test methods;
EN1186-3:2002 aqueous food simulants by total immersion method;

Surface area(dm²)/Volume(ml):

7# 1/100

8# 1/100

9# 1/100

Test Items	Unit	Test Condition	Result		Maximum Permissible Limit
			7#	8#	
Overall migration	mg/dm ²	3 % acetic acid at 70°C for 30 minutes	<3.0	<3.0	8

Test Items	Unit	Test Condition	Result	Maximum Permissible Limit
			9#	
Overall migration	mg/dm ²	3 % acetic acid at 70°C for 30 minutes	<3.0	8

Remark: Report the third extractive results.

14. Extractable Nickel & Extractable Chromium & Extractable Manganese

Test Method: Sample preparation with reference to EN 13130-1: 2004 with selection of simulant and condition, followed by analysis by ICP-AES and ICP-MS.

Surface area(dm²)/Volume(ml):

7# 1/167

8# 1/167

Test Items	Unit	Test Condition	Results		Maximum Permissible Limit
			7#	8#	
Extractable nickel	mg/kg	3 % acetic acid at 70°C for 30 minutes	<0.05	<0.05	0.1
Extractable chromium	mg/kg	3 % acetic acid at 70°C for 30 minutes	0.06	<0.05	0.1
Extractable manganese	mg/kg	3 % acetic acid at 70°C for 30 minutes	<0.05	<0.05	0.1

Remark: Report the third extractive results.

***** To be continued *****

15.Composition analysis

Test Method: Followed by analysis using Inductively Coupled Argon Plasma Spectrometry, Carbon sulfur analyzer.

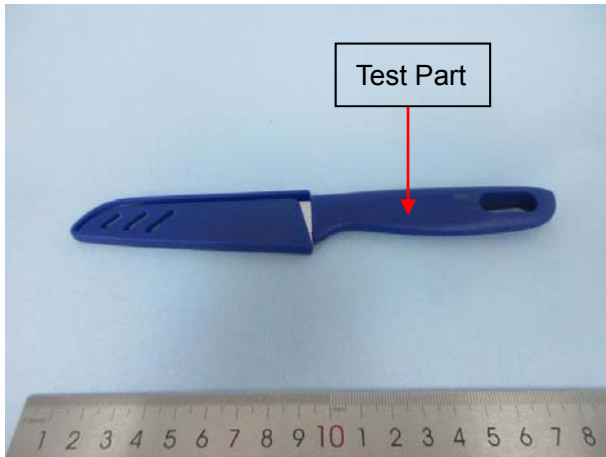
Sample No.	Test Results (%)					
	C	Si	Mn	P	Cr	S
7#	0.207	0.43	0.34	0.023	13.44	0.003
8#	0.242	0.42	0.36	0.022	13.89	0.005
9#	0.293	0.58	0.34	0.021	12.58	0.005
Permissible Limit(420)	≥0.15	≤1.00	≤1.00	≤0.040	12.0-14.0	≤0.030

Remark: % = Percentage by weight.

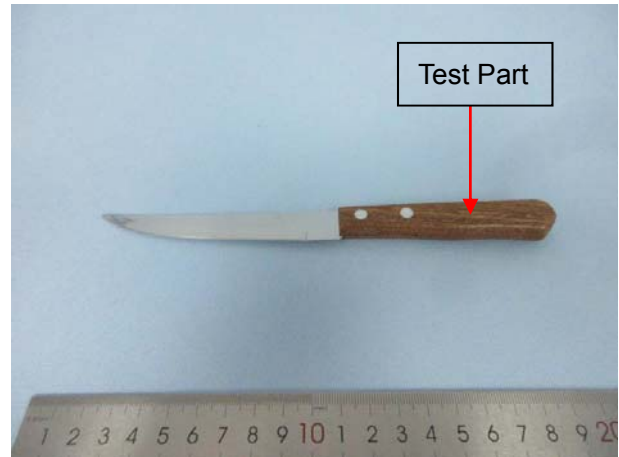
Test Part Description:

- 1# Blue plastic handle
- 2# Wooden handle
- 3# Brown wooden handle
- 4# Silver metal handle
- 5# Silver metal button
- 6# Black webbing + black overlock fabric+ beige fabric
- 7# Silver stainless steel blade (SS2CR14)
- 8# Silver stainless steel blade (SS2CR14)
- 9# Silver metal blade (SS3CR13)

***** To be continued *****

SAMPLE PHOTOS

1#



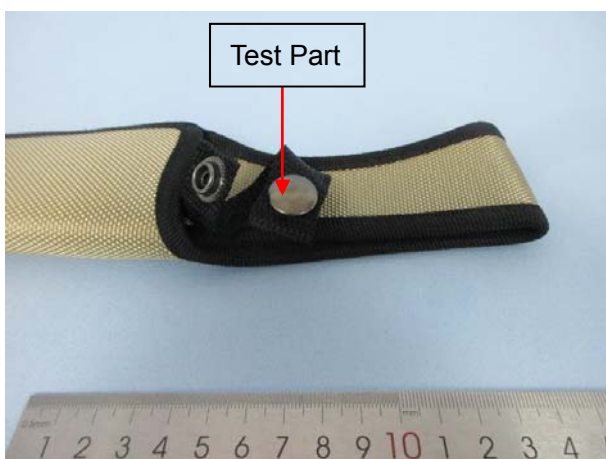
2#



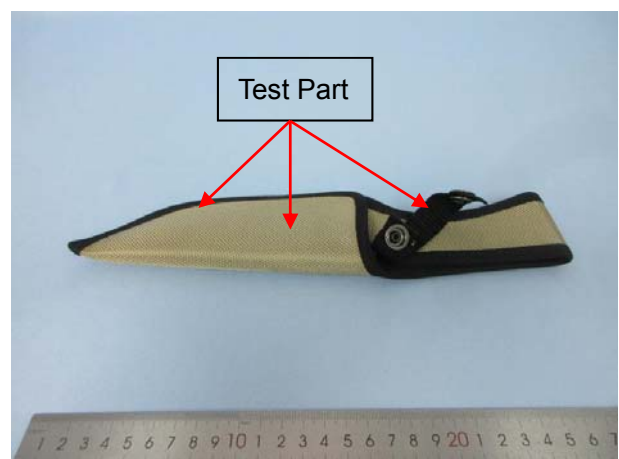
3#



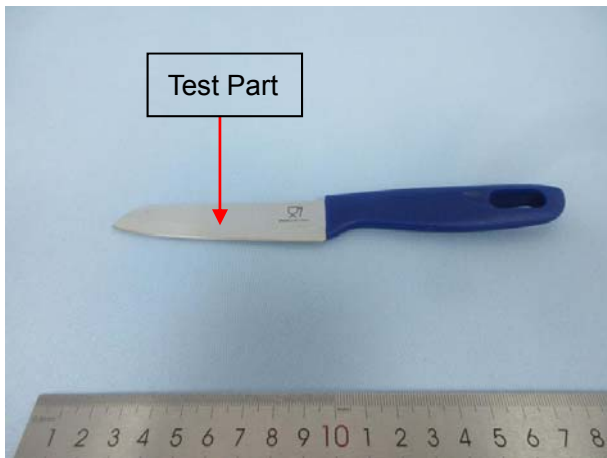
4#



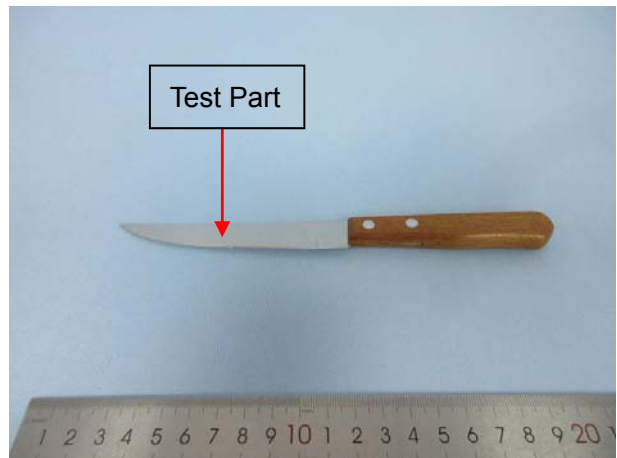
5#



6#



7#



8#



9#

PRODUCT PHOTOS******* END OF REPORT *******



TEST REPORT

Reference No. : SZ2022100623-1E

Date : Dec. 14, 2022

Page No.: 16 of 17

GENERAL CONDITIONS OF SERVICES

STQ Testing Services Co.,Ltd. (hereinafter "STQ"), The testing or examining under the request of the customer should obey terms as follow, according to regulation of "Contract Law of the People's Republic of China" on processing and undertaking contract, our company have legal right of termination without any reason and have the right to accept or refuse testing or examining request:

1. STQ only acts for the person or body originating the instructions (the "Clients"). No other party is entitled to give instructions, particularly on the scope of testing or delivery of report or certificate, unless authorized by the Clients.
2. The delivery and return fee of the samples which need to do testing at STQ should be paid by the client. STQ will not bear the responsibility for the testing error that is caused by transporting, packaging and labelling.
3. Sample recycling: when the testing or examining is finished, the customer should recycle the sample. Within 30 days after issuing of testing report, if the customer could not recycle the sample or send notification of sample recycling in written (for example, if the sample belongs to consumables, toxic drugs, dangerous goods and other items that are not suitable for long-term storage, such as semi-finished products and fragile samples such as liquids and powders, the retention period will be shortened to 7 days). After the retention period, STQ has the right to dispose of the sample arbitrarily without paying compensation or compensation to the customer and take no responsibility for the consequences that damages the customer's trade secrets and intellectual property rights due to the loss of the sample.
4. The Clients shall always comply with the following before or during STQ providing its services:
 - a) provide sample(s) and relevant data, at the same time, guarantee the consistence of the sample(s)' name they declared with the sample(s) or the goods provided. Otherwise, STQ will not bear any relevant responsibilities;
 - b) giving timely instructions and adequate information to enable STQ to perform the services effectively;
 - c) supply, when requested by STQ, any equipment and personnel for the performance of the services;
 - d) take all necessary steps to eliminate or remedy any obstruction in the performance of the services;
 - e) inform STQ in advance of any hazards or dangers, actual or potential, associated with any order of samples or testing;
 - f) provide all necessary access for STQ's representative to enable the required services to be performed effectively;
 - g) ensure all essential steps are taken for safety of working conditions, sites and installations during the performance of services;
 - h) fully discharge all its liabilities under any contract like sales contract with a third party, whether or not a report or certificate has been issued by STQ, failing which STQ shall be under no obligation to the Clients.
5. Subject to STQ's accepting the Client's instructions, STQ will issue reports or certificates which reflect statements of opinion made with due care within the scope of instructions but STQ is not obliged to report upon any facts outside the instructions, if there were any dissidence about the report or certificate, the Client should provide the written declaration to STQ within 15 days after the date receiving the report or certificate, otherwise, STQ will not hear the case after the date limit.
6. STQ is irrevocably authorized by the Clients to deliver at its discretion the report or the certificate to any third party when instructed by the Clients or where it implicitly follows from circumstances, trade custom, usage or practice as determined by STQ.
7. A test report will be issued in confidence to the Clients and it will be strictly treated as such by STQ. It may not be reproduced either in its entirety or in part and it may not be used for advertising or other unauthorized purposes without the written consent of STQ. The Clients to whom the Report is issued may, however, show or send it, or a certified copy thereof prepared by STQ, to his customer, supplier or other persons directly concerned. STQ will not, without the consent of the Clients, enter into any discussion or correspondence with any third party concerning the contents of the report unless required by the relevant governmental authorities, laws or court orders.
8. Applicants wishing to use STQ's reports in court proceedings or arbitration shall inform STQ to that effect prior to submitting the sample for testing.
9. The report will refer only to the sample tested and will not apply to the bulk, unless the sampling has been carried out by STQ and is stated as such in the Report. Also, the report is only for reference.
10. Any documents containing engagements between the Clients and third parties like contracts of sale, letters of credit, bills of lading, etc. are regarded as information for STQ only and do not affect the scope of the services or the obligations accepted by STQ.
11. If the Clients do not specify the methods/standards to be applied, STQ will choose the appropriate ones and further information regarding the methods can be obtained by direct contact with STQ, for the in-house method, STQ will only provide the summary.
12. No liability shall be incurred by and no claim shall be made against STQ or its servants, agents, employees or independent contractors in respect of any loss or damage to any such materials, equipment and property occurring whilst at STQ or any work places in which the testing is carried out, or in the course of transit to or from STQ or the said work places, whether or not resulting from any acts, neglect or default on the part of any such servants, agents, employees or independent contractors of STQ.
13. STQ will not be liable, or accept responsibility for any loss or damage howsoever arising from the use of information contained in any of its reports or in any communication whatsoever about its said tests or investigations.
14. Except for term 11 and term 12, if the test sample is damaged due to the negligence of STQ, the total compensation for loss and damage to the sample or loss to the customer shall not exceed twice of the test service fee.
15. In the event of STQ prevented by any cause outside STQ's control from performing any service for which an order has been given or an agreement made, the Clients shall pay to STQ:
 - a) the amount of all abortive expenditure actually made or incurred;
 - b) a proportion of the agreed fee or commission equal to the proportion (if any) of the service actually carried out by STQ, and STQ shall be relieved of all responsibility whatsoever for the partial or total non-performance of the required service.
16. STQ shall be discharged from all liabilities for all claims for loss, damage or expense unless suit is brought within one calendar

STQ Testing Services Co., Ltd.

Add.: Building 1, 15 Yinzhu Road, High-new district, Suzhou, China 215129

Tel.: +86/(0)512 67991866

Fax: +86/(0)512 87661802

Web: www.stq-cert.com

Technical service: TS@stq-cert.com

Customer service: CS@stq-cert.com



TEST REPORT

Reference No. : SZ2022100623-1E

Date : Dec. 14, 2022

Page No.: 17 of 17

- year after the date of the performance by STQ of the service relating to the claim or in the event of any alleged non—performance within one year of the date when such service should have been completed.
17. The Clients acknowledge that STQ does not, either by entering into a contract or by performing service, assume or undertake to discharge any duty of the Clients to any other persons. STQ is neither an insurer nor a guarantor and disclaims all liability in such capacity.
 18. The Clients shall hold harmless and indemnify STQ and its officers, employees, agents or independent contractors against all claims made by any third party for loss, damage or expense of whatsoever nature including reasonable legal expenses relating to the performance or non- performance of any services to the extent that the aggregate of any such claims relating to any one service exceed the limits mentioned in Clause 13.
 19. Any unauthorized alteration, forgery or falsification of the content or appearance of the report/certificate is unlawful and offenders may be prosecuted to the fullest extent of the law; in the event of improper use of the report, STQ reserves the right to withdraw it, and to adopt any other measures which may be appropriate.
 20. Samples are deposited with and accepted by STQ on the basis that either they are insured by the Clients or the Clients assumes entire responsibility for loss through fire, theft, burglary or for damages arising in the course of analysis or handling, without recourse whatsoever to STQ or its servants, agent, employees or independent contractors.
 21. If the requirements of the Clients require the analysis of samples by the Clients' or any third party's laboratory, STQ will only convey the result of the analysis without responsibility for its accuracy. If STQ is only able to witness an analysis by the Clients' or any third Party's laboratory STQ will only confirm that the correct sample has been analyzed without responsibility for the accuracy of any analysis or results.
 22. In the event of any unforeseen additional time or costs being incurred in the course of carrying out any of its services, STQ shall be entitled to charge the Clients additional fees to reflect the additional time and costs incurred.
 23. All rights (including but not limited to copyright) in any reports, certificates or other materials produced by STQ in the course of providing its services shall remain vested in STQ.
 24. Unless otherwise agreed in written, payment should be arranged within 10 days after the invoice date or the debit note date. If the payment is overdue, the overdue penalty shall be calculated at 1‰ per day of the unpaid part till the actual payment date. All expenses, costs and losses incurred by STQ as a result of collecting or claiming the fees owed shall be borne by the customer, including but not limited to attorney fees, litigation fees, preservation fees, preservation guarantee fees, travel expenses, etc.
 25. Test results may be transmitted by electronic means at the Client's request. However, it should be noted that electronic transmission cannot guarantee the information contained will not be lost, delayed or intercepted by third party. STQ is not liable for any disclosure, error or omission in the content of such messages as a result of electronic transmission.
 26. If necessary, STQ may subcontract part of or all tests to competent subcontractors. If no objection is raised at the time of the Clients submitting the application, STQ shall assume the Client's approval.
 27. This report/certificate does not relieve sellers/suppliers from their contractual responsibility with regards to the quality/quantity of this delivery nor does it prejudice the Client's right to claim towards sellers/suppliers for compensation for any apparent and/or hidden defects not detected during STQ's random inspection or testing or audit.
 28. The testing data and result(s) in this reportis(are) just for scientific research, education, internal quality control and product development etc.
 29. STQ reserves the right to include Special Conditions in addition to the foregoing General Conditions if warranted by the particular circumstances of the required test or investigation [this clause is only effective when the other party has been informed].
 30. The foregoing General Conditions shall in all respects be governed, construed, interpreted and operated in accordance with the relevant Chinese laws and regulations. Unless otherwise agreed, the arbitration shall take place in P. R. C
 31. These General Condition have been drafted in Chinese and may be translated into other languages. In the event of any discrepancy, the Chinese version shall prevail.
 32. In general sample will be stored for 30 days. But for liquid, powder, etc semi-product & fragile product, it will be stored for 15 days after the report is issued.

STQ Testing Services Co., Ltd.

Add.: Building 1, 15 Yinzhur Road, High-new district, Suzhou, China 215129

Tel.: +86/(0)512 67991866

Fax: +86/(0)512 87661802

Web: www.stq-cert.com

Technical service: TS@stq-cert.com

Customer service: CS@stq-cert.com