

Verification Report

Report No.: LCS211029082AR001

Date: 2021.11.11

Page 1 of 9

Applicant : PAUL STRICKER, SA

Address : Núcleo Industrial de Murtede, Lote 5, 3060-372 Murtede - PORTUGAL

Report on the submitted samples said to be:

Sample Name(s) : Wireless earbuds

Trade Mark : N/A

Part No. : 97085, XO-9568-3

Sample Received Date : N/A

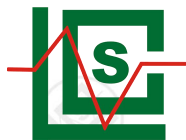
Testing Period : November 04, 2021 ~ November 11, 2021

Results : Please refer to next page(s).

TEST REQUEST	CONCLUSION
As specified by client, based on the performed tests on submitted sample, the result of Lead(Pb), Cadmium(Cd), Mercury(Hg), Hexavalent Chromium(Cr(VI)), PBBs, PBDEs, Dibutyl Phthalate(DBP), Butylbenzyl Phthalate(BBP), Di-2-ethylhexyl Phthalate(DEHP) and Diisobutyl phthalate(DIBP) content comply with the limits set by RoHS Directive 2011/65/EU with amendment (EU) 2015/863.	PASS

Signed for and on behalf of LCS

Young/Laboratory Manager



Verification Report

Report No.: LCS211029082AR001

Date: 2021.11.11

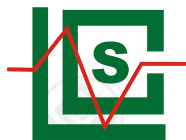
Page 2 of 9

Results:

A. EU RoHS Directive 2011/65/EU and its amendment directives

Test method: With reference to IEC 62321-3-1:2013, Screening by X-ray Fluorescence Spectroscopy (XRF)

Sample No.	Sample Description	Results						Date of sample submission/ Resubmission
		Cd	Pb	Hg	Cr▼	Br▼		
						PBBs	PBDEs	
1	White plastic case	BL	BL	BL	BL	BL	BL	2021-11-04
2	Black metal screws	BL	BL	BL	BL	/	/	2021-11-04
3	Black plastic bracket	BL	BL	BL	BL	BL	BL	2021-11-04
4	Silvery metal	BL	BL	BL	BL	/	/	2021-11-04
5	Silver tinsel	BL	BL	BL	BL	/	/	2021-11-04
6	Red thread	BL	BL	BL	BL	BL	BL	2021-11-04
7	Green plastic board	BL	BL	BL	BL	BL	BL	2021-11-04
8	Silver metal solder	BL	BL	BL	BL	/	/	2021-11-04
9	Black leather	BL	BL	BL	BL	BL	BL	2021-11-04
10	Silver perforated metal sheet	BL	BL	BL	BL	/	/	2021-11-04
11	Black plastic snap	BL	BL	BL	BL	BL	BL	2021-11-04
12	Silver metal sheet	BL	BL	BL	BL	/	/	2021-11-04
13	Black plastic base	BL	BL	BL	BL	BL	BL	2021-11-04
14	Silver metal pins	BL	BL	BL	BL	/	/	2021-11-04
15	Black body	BL	BL	BL	BL	BL	BL	2021-11-04
16	Silver metal case	BL	BL	BL	BL	/	/	2021-11-04
17	Black plastic bracket	BL	BL	BL	BL	BL	BL	2021-11-04
18	Silver metal pins	BL	BL	BL	BL	/	/	2021-11-04
19	Ferrous metal core	BL	BL	BL	BL	/	/	2021-11-04
20	Copper-colored metal wire	BL	BL	BL	BL	/	/	2021-11-04
21	White plastic button	BL	BL	BL	BL	BL	BL	2021-11-04
22	White plastic case	BL	BL	BL	BL	BL	BL	2021-11-04
23	Silver plastic	BL	BL	BL	BL	BL	BL	2021-11-04
24	Black cloth	BL	BL	BL	BL	BL	BL	2021-11-04
25	Silvery metal	BL	BL	BL	BL	/	/	2021-11-04
26	Translucent plastic film	BL	BL	BL	BL	BL	BL	2021-11-04
27	Copper-colored metal wire	BL	BL	BL	BL	/	/	2021-11-04
28	Silvery metal	BL	BL	BL	BL	/	/	2021-11-04



Verification Report

Report No.: LCS211029082AR001

Date: 2021.11.11

Page 3 of 9

Sample No.	Sample Description	Results						Date of sample submission/ Resubmission
		Cd	Pb	Hg	Cr▼	Br▼		
						PBBs	PBDEs	
29	Silver metal magnet	BL	BL	BL	BL	/	/	2021-11-04
30	Black plastic bracket	BL	BL	BL	BL	BL	BL	2021-11-04
31	Silver metal needle	BL	BL	BL	BL	/	/	2021-11-04
32	Black body	BL	BL	BL	BL	BL	BL	2021-11-04
33	Black leather	BL	BL	BL	BL	BL	BL	2021-11-04
34	Red thread	BL	BL	BL	BL	BL	BL	2021-11-04
35	White foam	BL	BL	BL	BL	BL	BL	2021-11-04
36	Silver body	BL	BL	BL	BL	BL	BL	2021-11-04
37	White wire jacket	BL	BL	BL	BL	BL	BL	2021-11-04
38	Blue thread	BL	BL	BL	BL	BL	BL	2021-11-04
39	Black body	BL	BL	BL	BL	BL	BL	2021-11-04
40	Silver body	BL	BL	BL	BL	BL	BL	2021-11-04
41	Black plastic case	BL	BL	BL	BL	BL	BL	2021-11-04
42	Black plastic case	BL	BL	BL	BL	BL	BL	2021-11-04

Note:

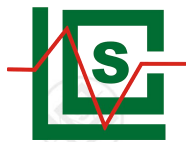
- Results were obtained by XRF for primary screening, and further chemical testing by ICP(for Cd, Pb, Hg), UV-Vis(for Cr(VI)) and GC-MS(for PBBs, PBDEs) are recommended to be performed, if the concentration exceeds the below warning value according to IEC 62321-3-1:2013(Unit: mg/kg).

Element	Polymers	Metals	Composite material
Cd	$BL \leq (70-3\sigma) < X < (130+3\sigma) \leq OL$	$BL \leq (70-3\sigma) < X < (130+3\sigma) \leq OL$	$LOD < X < (150+3\sigma) \leq OL$
Pb	$BL \leq (700-3\sigma) < X < (1300+3\sigma) \leq OL$	$BL \leq (700-3\sigma) < X < (1300+3\sigma) \leq OL$	$BL \leq (500-3\sigma) < X < (1500+3\sigma) \leq OL$
Hg	$BL \leq (700-3\sigma) < X < (1300+3\sigma) \leq OL$	$BL \leq (700-3\sigma) < X < (1300+3\sigma) \leq OL$	$BL \leq (500-3\sigma) < X < (1500+3\sigma) \leq OL$
Cr	$BL \leq (700-3\sigma) < X$	$BL \leq (700-3\sigma) < X$	$BL \leq (500-3\sigma) < X$
Br	$BL \leq (300-3\sigma) < X$	N/A	$BL \leq (250-3\sigma) < X$

Remark:

- BL= Below Limit
- OL= Over Limit
- X= The range of needing to do further testing
- 3σ = The reproducibility of analytical instruments
- N/A= Not applicable
- LOD= Detection limit

- The XRF screening test for RoHS elements – The reading may be different to the actual content in the sample be of non-uniformity composition.



Verification Report

Report No.: LCS211029082AR001

Date: 2021.11.11

Page 4 of 9

3. The maximum permissible limit is quoted from the document RoHS Directive 2011/65/EU with amendment (EU) 2015/863.
4. ▼=For restricted substances PBBs and PBDEs, the results show the total Br content, the restricted substance was Cr(VI), and the results showed the total Cr content.

RoHS Restricted Substances	Maximum Concentration Value (mg/kg) (by weight in homogenous materials)
Cadmium(Cd)	100
Lead(Pb)	1000
Mercury(Hg)	1000
Hexavalent Chromium(Cr(VI))	1000
Polybrominated biphenyls(PBBs)	1000
Polybrominated diphenylethers(PBDEs)	1000
Dibutyl Phthalate(DBP)	1000
Butylbenzyl Phthalate(BBP)	1000
Di-(2-ethylhexyl) Phthalate(DEHP)	1000
Diisobutyl phthalate(DIBP)	1000

Disclaimers:

This XRF Screening report is for reference purposes only. The applicant shall make its/his/her own judgment as to whether the information provided in this XRF screening report is sufficient for its/his/her purposes. The result shown in this XRF screening report will differ based on various factors, including but not limited to, the sample size, thickness, area, surface flatness, equipment parameters and matrix effect (e.g. plastic, rubber, metal, glass, ceramic etc.). Further wet chemical pre-treatment with relevant chemical equipment analysis are required to obtain quantitative data.



Verification Report

Report No.: LCS211029082AR001

Date: 2021.11.11

Page 5 of 9

B. EU RoHS Directive 2011/65/EU with amendment (EU) 2015/863 on DBP, BBP, DEHP & DIBP content

Test method:

DBP, BBP, DEHP & DIBP Content:

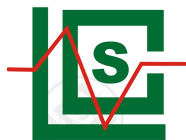
With reference to IEC 62321-8:2017, by solvent extraction and analysis was performed by gas chromatographic-mass spectrometer (GC-MS).

1) The test results of DBP, BBP, DEHP & DIBP

Tested Items	Unit	MDL	Results	Limit
			(1+3+6+7+11+13)	
Dibutyl Phthalate(DBP) Content	mg/kg	600	N.D.	1000
Butylbenzyl Phthalate(BBP) Content	mg/kg	600	N.D.	1000
Di-(2-ethylhexyl) Phthalate(DEHP) Content	mg/kg	600	N.D.	1000
Diisobutyl phthalate(DIBP) Content	mg/kg	600	N.D.	1000

Tested Items	Unit	MDL	Results	Limit
			(15+17+21+22+23+24)	
Dibutyl Phthalate(DBP) Content	mg/kg	600	N.D.	1000
Butylbenzyl Phthalate(BBP) Content	mg/kg	600	N.D.	1000
Di-(2-ethylhexyl) Phthalate(DEHP) Content	mg/kg	600	N.D.	1000
Diisobutyl phthalate(DIBP) Content	mg/kg	600	N.D.	1000

Tested Items	Unit	MDL	Results	Limit
			(26+30+32+33+35+36)	
Dibutyl Phthalate(DBP) Content	mg/kg	600	N.D.	1000
Butylbenzyl Phthalate(BBP) Content	mg/kg	600	N.D.	1000
Di-(2-ethylhexyl) Phthalate(DEHP) Content	mg/kg	600	N.D.	1000
Diisobutyl phthalate(DIBP) Content	mg/kg	600	N.D.	1000



Verification Report

Report No.: LCS211029082AR001

Date: 2021.11.11

Page 6 of 9

Tested Items	Unit	MDL	Results	Limit
			(37+38+39+40+41+42)	
Dibutyl Phthalate(DBP) Content	mg/kg	600	N.D.	1000
Butylbenzyl Phthalate(BBP) Content	mg/kg	600	N.D.	1000
Di-(2-ethylhexyl) Phthalate(DEHP) Content	mg/kg	600	N.D.	1000
Diisobutyl phthalate(DIBP) Content	mg/kg	600	N.D.	1000

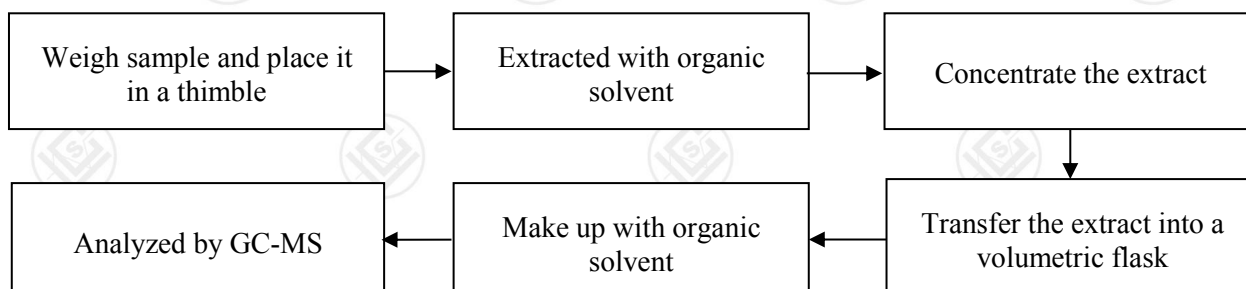
Tested Items	Unit	MDL	Results		Limit
			(9)	(34)	
Dibutyl Phthalate(DBP) Content	mg/kg	100	N.D.	N.D.	1000
Butylbenzyl Phthalate(BBP) Content	mg/kg	100	N.D.	N.D.	1000
Di-(2-ethylhexyl) Phthalate(DEHP) Content	mg/kg	100	N.D.	N.D.	1000
Diisobutyl phthalate(DIBP) Content	mg/kg	100	N.D.	N.D.	1000

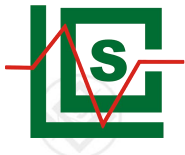
Note:

- MDL = Method Detection Limit
- N.D.=Not Detected(<MDL or LOQ)
- mg/kg = ppm=parts per million
- The LCS211029082AR001 report replaces the original LCS211029082AR report, and the original report is invalid.

Test Process

1. Phthalates(DBP, BBP, DEHP & DIBP) : IEC 62321-8:2017





Verification Report

Report No.: LCS211029082AR001

Date: 2021.11.11

Page 7 of 9

The photo(s) of the sample



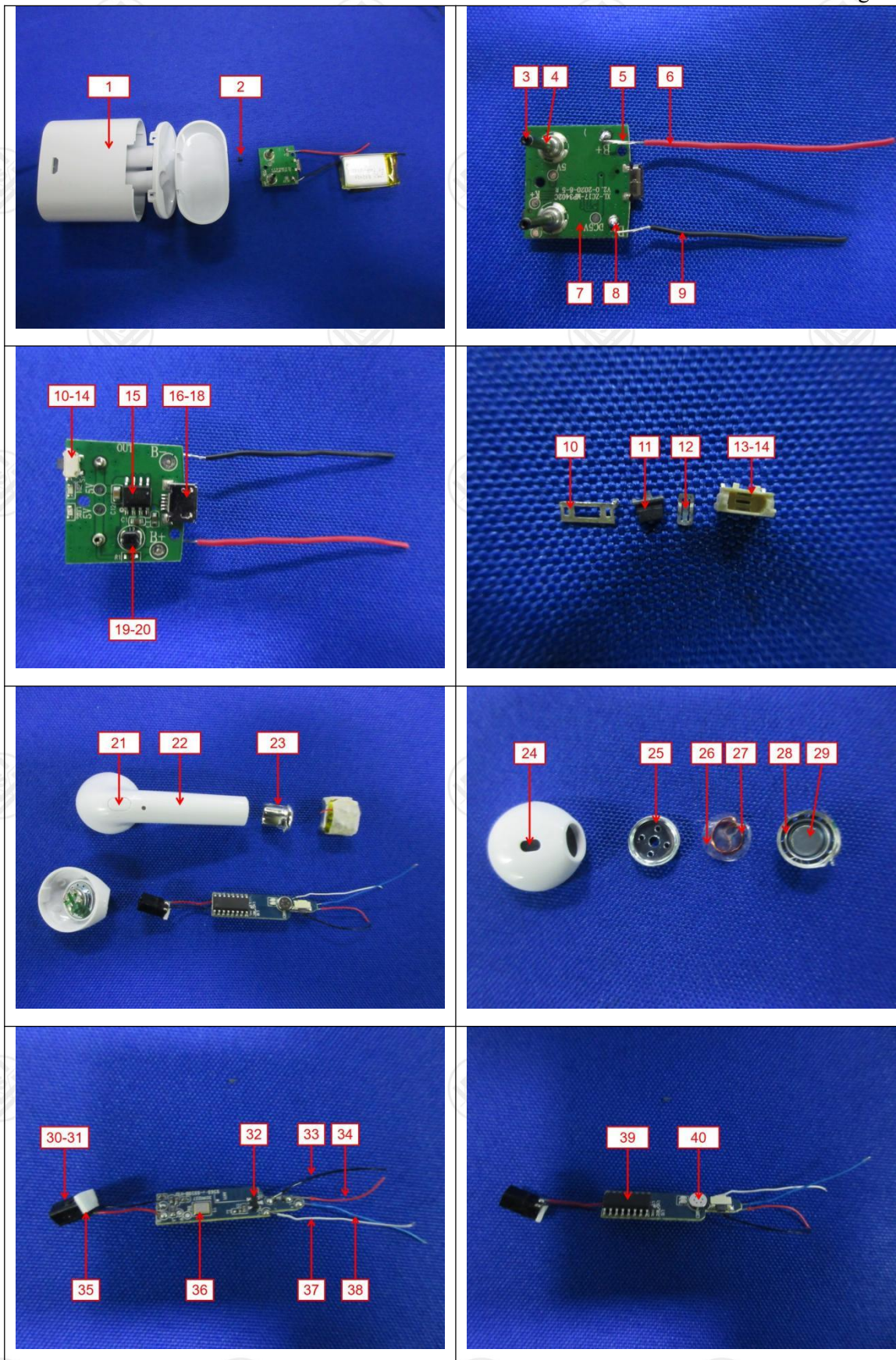


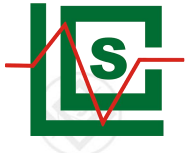
Verification Report

Report No.: LCS211029082AR001

Date: 2021.11.11

Page 8 of 9



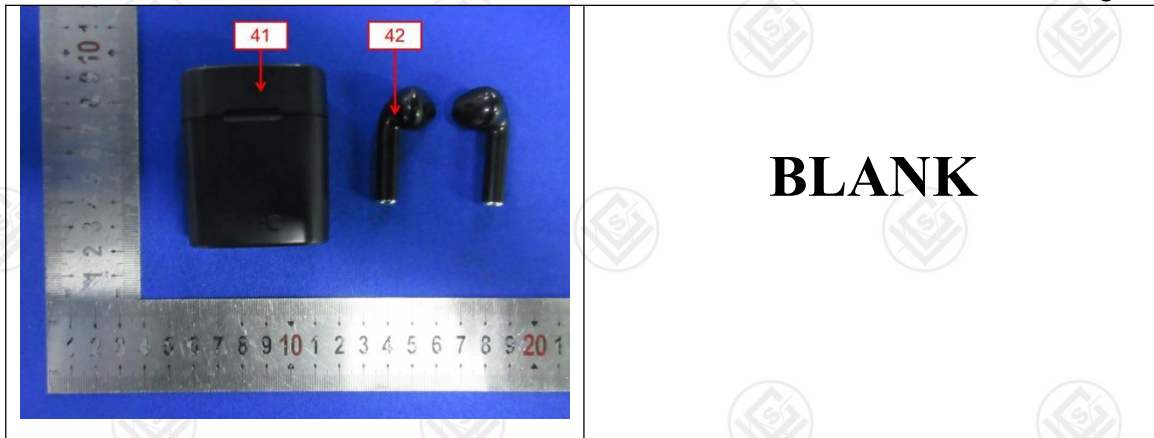


Verification Report

Report No.: LCS211029082AR001

Date: 2021.11.11

Page 9 of 9



Statement:

1. The report is considered invalid without approved signature, special seal;
2. The Company Name shown on Report and Address, the sample(s) and sample information was/were provided by the applicant who should be responsible for the authenticity which LCS hasn't verified;
3. The result(s) shown in this report refer only to the sample(s) tested.;
4. Without written approval of LCS, this report can't be reproduced except in full;
5. In case of any discrepancy between the English version and Chinese version of the testing reports (if generated), the Chinese version shall prevail.

*** End of Report ***