



TEST REPORT

Reference No. : SZ2018011088-1E

Date : Feb. 07, 2018

Page No. : 1 of 21

Client : Paul Stricker SA

Address : N.I. Murtede, It5 – 3060-372 Murtede - Portugal

The following merchandise was (were) submitted and identified by the client as:

Name of Product : Writing Set & Kompass Pack

Test Model : 93574 & 93575

Model May Cover : /

Main Material : /

Labeled Age Grading: 3+ years

Applicant's Specified

Age Group for Testing : 3+ years

Age Grading for Test: 3+ years

Sample Received : Jan. 24, 2018

Test Period : Jan. 24, 2018 - Jan. 30, 2018

Test Specification and Conclusion:

As requested by the client, to do the following test items:

Requirement:	Conclusion:
1. Mechanical and Physical Properties according to EN71 Part 1: 2014	PASS
2. Flammability according to EN71 Part 2:2011+A1:2014	PASS
3. Migration of Certain Element according to EN 71-3:2013+A2:2017 & 2009/48/EC	PASS
4. Phthalate content according to REACH Annex XVII (entry 51&52)	PASS

Prepared By :

Ada Wang
Testing Engineer

Reviewed By :

Cookie Chen
Project Supervisor

Issued By :



STQ Testing Services Co., Ltd.

Add.:3F,B3,218 Xinghu St., Suzhou Industrial Park,China,215123

Tel.:+86/(0)512 87661878

Fax: +86/(0)512 87661802

Web:www.stq-cert.com

Technical service: TS@stq-cert.com

Customer service: CS@stq-cert.com

TEST RESULTS:

1. European Standard-Safety of Toys: EN71 Part 1: 2014-Mechanical and Physical Properties

Test Items		Test Results	
		1#	13#
4.1	Material	PASS	PASS
4.2	Assembly	N/A	N/A
4.3	Flexible plastic sheeting	N/A	N/A
4.4	Toy bags	N/A	N/A
4.5	Glass	N/A	N/A
4.6	Expanding materials	N/A	N/A
4.7	Edges	PASS	PASS
(a)	Edges of metal or glass	N/A	N/A
(b)	Overlap joints	N/A	N/A
(c)	Edges of metal and of rigid polymeric material	N/A	PASS
(d)	Functional edges	PASS	N/A
4.8	Points and wires	PASS	PASS
(a)	Points	N/A	N/A
(b)	Sharp functional points	PASS	PASS
(c)	Metallic wires intended to be bent	N/A	N/A
(d)	Metallic wires not designed to be bent	N/A	N/A
(e)	Splinters on surfaces and accessible edges of toys	N/A	N/A
4.9	Protruding parts	N/A	N/A
4.10	Parts moving against each other	N/A	N/A
4.10.1	Folding and slide mechanism	N/A	N/A
4.10.2	Driving mechanisms	N/A	N/A
4.10.3	Hinges	N/A	N/A
4.10.4	Spring	N/A	N/A
4.11	Mouth-actuated toys	N/A	N/A
4.12	Balloons	N/A	N/A
4.13	Cords of toy kites and other flying toys	N/A	N/A
4.14	Enclosures	N/A	N/A
4.14.1	Toys which a children can enter	N/A	N/A
4.14.2	Masks and helmets	N/A	N/A
4.15	Toys intended to bear the mass of a child	N/A	N/A
4.15.1	Toys propelled by the child or by other means	N/A	N/A
4.15.2	Free-wheeling toy bicycles	N/A	N/A
4.15.3	Rocking horses and similar toys	N/A	N/A

STQ Testing Services Co., Ltd.

Add.:3F,B3,218 Xinghu St., Suzhou Industrial Park,China,215123

Tel.:+86/(0)512 87661878

Fax: +86/(0)512 87661802

Web:www.stq-cert.com

Technical service: TS@stq-cert.com

Customer service: CS@stq-cert.com



TEST REPORT

Reference No. : SZ2018011088-1E

Date : Feb. 07, 2018

Page No. : 3 of 21

4.15.4	Toys not propelled by a child	N/A	N/A
4.15.5	Toys scooters	N/A	N/A
4.16	Heavy immobile toys	N/A	N/A
4.17	Projectiles	N/A	N/A
4.17.1	General	N/A	N/A
4.17.2	Projectile toys without stored energy	N/A	N/A
4.17.3	Projectile toys with stored energy	N/A	N/A
4.17.4	Bows and arrows	N/A	N/A
4.18	Aquatic toys and inflatable toys	N/A	N/A
4.19	Percussion caps specifically designed for use in toys and toys using percussion caps	N/A	N/A
4.20	Acoustics	N/A	N/A
4.21	Toys containing a heat source	N/A	N/A
4.22	Small balls	N/A	N/A
4.23	Magnets	N/A	N/A
4.23.1	General	N/A	N/A
4.23.2	Toys other than magnetic/electrical experimental sets	N/A	N/A
4.23.3	Magnetic/ electrical experimental sets	N/A	N/A
4.24	Yo-yo balls	N/A	N/A
4.25	Toys attached to food	N/A	N/A

Test Items	Test Results	
	1#	13#
5. Toys intended for children under 36 months		
5.1 General requirements	N/A	N/A
(a) Toys and removable components of toys shall not, whatever their position fit entirely in the cylinder	N/A	N/A
(b) When tested toys shall not produce any parts which, whatever their position, fit entirely in the cylinder, or exhibit accessible hazardous sharp edges or accessible hazardous sharp points	N/A	N/A
(c) Metal points and wires with a cross section of 2 mm or less	N/A	N/A
(d) Large and bulky toys	N/A	N/A
(e) Glued wooden toys and toys with glued-on plastic decals	N/A	N/A
(f) The casing of toys	N/A	N/A
(g) For foam toys and toys containing accessible foam components	N/A	N/A
5.2 Soft-filled toys and soft-filled parts of a toy	N/A	N/A

STQ Testing Services Co., Ltd.

Add.:3F,B3,218 Xinghu St., Suzhou Industrial Park,China,215123

Tel.:+86/(0)512 87661878

Fax: +86/(0)512 87661802

Web:www.stq-cert.com

Technical service: TS@stq-cert.comCustomer service: CS@stq-cert.com



TEST REPORT

Reference No. : SZ2018011088-1E

Date : Feb. 07, 2018

Page No. : 4 of 21

(a)	Hard and sharp contaminants	N/A	N/A
(b)	Soft-filled toys and soft-filled parts of a toy containing small parts	N/A	N/A
(c)	fibrous filling material	N/A	N/A
5.3	Plastic sheeting	N/A	N/A
5.4	Cord, chains and electrical cables in toys	N/A	N/A
(a)	Cords connected to a self-retraction mechanism and cords in pull-along toys	N/A	N/A
(b)	Cords and chains that can form a tangled loop or a noose	N/A	N/A
(c)	Fixed loops of cords or chains	N/A	N/A
(d)	The perimeter of nooses	N/A	N/A
(e)	The force of self-retraction mechanisms for cords in toys	N/A	N/A
(f)	Toys with cords intended to be strung across a cradle, cot or perambulator	N/A	N/A
(g)	Cords and chains with a free end on toys intended for children under 18 months	N/A	N/A
(h)	Cords and chains with a free end (i.e. with no attachments) on pull-along toys intended for children under 36 months	N/A	N/A
(i)	Toys with electrical cables	N/A	N/A
5.5	Liquid-filled toys	N/A	N/A
5.6	Speed limitation of electrically-driven ride-on toys	N/A	N/A
5.7	Glass and porcelain	N/A	N/A
5.8	Shape and size of certain toys	N/A	N/A
5.9	Toys comprising monofilament fibres	N/A	N/A
5.10	Small balls	N/A	N/A
5.11	Play figures	N/A	N/A
5.12	Hemispheric-shaped toys	N/A	N/A
5.13	Suction cups	N/A	N/A
5.14	Straps intended to be worn fully or partially around the neck	N/A	N/A

Test Items	Test Results	
	1#	13#
6. Packaging	PASS	PASS

***** To be continued *****

STQ Testing Services Co., Ltd.

Add.:3F,B3,218 Xinghu St., Suzhou Industrial Park,China,215123

Tel.:+86/(0)512 87661878

Fax: +86/(0)512 87661802

Web:www.stq-cert.com

Technical service: TS@stq-cert.com

Customer service: CS@stq-cert.com

Test Items		Test Results	
		1#	13#
7.	Warnings, markings and instructions for use Tracking information [CE mark, importer / manufacturer mark (name, address), product identification]	SEE REMARK	SEE REMARK
7.1	General	PASS	PASS
7.2	Toys not intended for children under 36 months	PASS	PASS
7.3	Latex balloons	N/A	N/A
7.4	Aquatic toys	N/A	N/A
7.5	Functional toys	N/A	N/A
7.6	Hazardous sharp functional edges and points	PASS	PASS
7.7	Projectiles	N/A	N/A
7.8	Imitation protective masks and helmets	N/A	N/A
7.9	Toy kites	N/A	N/A
7.10	Roller skates and toy skateboards	N/A	N/A
7.11	Toys intended to be strung across a cradle,cot,or perambulator	N/A	N/A
7.12	Liquid filled tethers	N/A	N/A
7.13	Percussion caps specifically designed for use in toys	N/A	N/A
7.14	Acoustics	N/A	N/A
7.15	Toys bicycle	N/A	N/A
7.16	Toys intended to bear the mass of a child	N/A	N/A
7.17	Toys comprising monofilament fibers	N/A	N/A
7.18	Toy scooters	N/A	N/A
7.19	Rocking horses and similar toys	N/A	N/A
7.20	Magnetic/electrical experimental sets	N/A	N/A
7.21	Toys with electrical cables exceeding 300mm in length	N/A	N/A
7.22	Toys with cords or chains intended for children of 18 months and over but under 36 months	N/A	N/A

Remark: It is drawn to your attention that the product identification number, name and address of manufacturer and importer in EEC country together with CE-marking should appear as specified in Directive-2009/48/EC-Safety of toys.

***** To be continued *****



TEST REPORT

Reference No. : SZ2018011088-1E

Date : Feb. 07, 2018

Page No. : 6 of 21

2. European Standard-Safety of Toys: EN71 Part 2: 2011+A1:2014-Flammability

Test Items		Test Results	
		1#	13#
4.1	General Requirements	PASS	PASS
4.2	Toys to be worn on the head	N/A	N/A
4.3	Toy disguise costumes and toys intended to be worn by a child in play	N/A	N/A
4.4	Toys intended to be entered by a child	N/A	N/A
4.5	Soft filled toys(animals and dolls, etc)with a piled or textile surface	N/A	N/A

***** To be continued *****

STQ Testing Services Co., Ltd.

Add.:3F,B3,218 Xinghu St., Suzhou Industrial Park,China,215123

Tel.:+86/(0)512 87661878

Fax: +86/(0)512 87661802

Web:www.stq-cert.com

Technical service: TS@stq-cert.com

Customer service: CS@stq-cert.com

3. European Standard-Safety of Toys:EN71 part 3:2013+A2:2017 Migration of Certain Element

Test Method: Extractable Chromium(VI)& Extractable Chromium (III) – With reference to EN 71 Part 3:2013+A2:2017, analysis was performed by HPLC-ICP-MS.

Elements – With reference to EN 71 Part 3:2013+A2:2017, analysis was performed by ICP-MS.

Extractable Organic Tin –With reference to EN 71 Part 3:2013+A2:2017, analysis was performed by GC-MS.

Test Item(s)	Unit	MDL	Result			Category III
			2# [▲]	3# [▲]	4# [▲]	
Extractable Lead (Pb)	mg/kg	10	N.D.	N.D.	N.D.	23
Extractable Antimony (Sb)	mg/kg	10	N.D.	N.D.	N.D.	560
Extractable Arsenic (As)	mg/kg	10	N.D.	N.D.	N.D.	47
Extractable Barium (Ba)	mg/kg	50	N.D.	N.D.	N.D.	18750
Extractable Cadmium (Cd)	mg/kg	10	N.D.	N.D.	N.D.	17
Extractable Chromium (III) (Cr III)	mg/kg	5	N.D.	N.D.	N.D.	460
Extractable Chromium (VI)(Cr VI)	mg/kg	0.2	N.D.	N.D.	N.D.	0.2
Extractable Mercury (Hg)	mg/kg	10	N.D.	N.D.	N.D.	94
Extractable Selenium (Se)	mg/kg	10	N.D.	N.D.	N.D.	460
Extractable Boron (B)	mg/kg	50	N.D.	N.D.	N.D.	15000
Extractable Cobalt (Co)	mg/kg	10	N.D.	N.D.	N.D.	130
Extractable Manganese (Mn)	mg/kg	50	N.D.	N.D.	N.D.	15000
Extractable Strontium (Sr)	mg/kg	50	N.D.	N.D.	N.D.	56000
Extractable Tin (Sn)	mg/kg	5	N.D.	N.D.	N.D.	180000
Extractable Zinc (Zn)	mg/kg	50	N.D.	N.D.	N.D.	46000
Extractable Copper (Cu)	mg/kg	50	N.D.	N.D.	N.D.	7700
Extractable Aluminum (Al)	mg/kg	50	N.D.	N.D.	55	70000
Extractable Nickel (Ni)	mg/kg	10	N.D.	N.D.	N.D.	930
Extractable Organic Tin	mg/kg	0.02	N.D.	N.D.	N.D.	12

***** To be continued *****



TEST REPORT

Reference No. : SZ2018011088-1E

Date : Feb. 07, 2018

Page No. : 8 of 21

Test Item(s)	Unit	MDL	Result				Category III
			5# [▲]	6# [▲]	7# [▲]	8# [▲]	
Extractable Lead (Pb)	mg/kg	10	N.D.	N.D.	N.D.	N.D.	23
Extractable Antimony (Sb)	mg/kg	10	N.D.	N.D.	N.D.	N.D.	560
Extractable Arsenic (As)	mg/kg	10	N.D.	N.D.	N.D.	N.D.	47
Extractable Barium (Ba)	mg/kg	50	N.D.	N.D.	N.D.	N.D.	18750
Extractable Cadmium (Cd)	mg/kg	10	N.D.	N.D.	N.D.	N.D.	17
Extractable Chromium (III) (Cr III)	mg/kg	5	N.D.	N.D.	N.D.	N.D.	460
Extractable Chromium (VI)(Cr VI)	mg/kg	0.2	N.D.	N.D.	N.D.	N.D.	0.2
Extractable Mercury (Hg)	mg/kg	10	N.D.	N.D.	N.D.	N.D.	94
Extractable Selenium (Se)	mg/kg	10	N.D.	N.D.	N.D.	N.D.	460
Extractable Boron (B)	mg/kg	50	N.D.	N.D.	N.D.	N.D.	15000
Extractable Cobalt (Co)	mg/kg	10	N.D.	N.D.	N.D.	N.D.	130
Extractable Manganese (Mn)	mg/kg	50	N.D.	N.D.	N.D.	N.D.	15000
Extractable Strontium (Sr)	mg/kg	50	N.D.	N.D.	N.D.	N.D.	56000
Extractable Tin (Sn)	mg/kg	5	N.D.	N.D.	N.D.	N.D.	180000
Extractable Zinc (Zn)	mg/kg	50	N.D.	N.D.	N.D.	N.D.	46000
Extractable Copper (Cu)	mg/kg	50	N.D.	N.D.	N.D.	N.D.	7700
Extractable Aluminum (Al)	mg/kg	50	N.D.	N.D.	N.D.	N.D.	70000
Extractable Nickel (Ni)	mg/kg	10	N.D.	N.D.	N.D.	N.D.	930
Extractable Organic Tin	mg/kg	0.02	N.D.	N.D.	N.D.	N.D.	12

***** To be continued *****

STQ Testing Services Co., Ltd.

Add.:3F,B3,218 Xinghu St., Suzhou Industrial Park,China,215123

Tel.:+86/(0)512 87661878

Fax: +86/(0)512 87661802

Web:www.stq-cert.com

Technical service: TS@stq-cert.comCustomer service: CS@stq-cert.com



TEST REPORT

Reference No. : SZ2018011088-1E

Date : Feb. 07, 2018

Page No. : 9 of 21

Test Item(s)	Unit	MDL	Result	Category I
			9# [▲]	
Extractable Lead (Pb)	mg/kg	0.5	N.D.	2.0
Extractable Antimony (Sb)	mg/kg	5	N.D.	45
Extractable Arsenic (As)	mg/kg	0.5	N.D.	3.8
Extractable Barium (Ba)	mg/kg	50	N.D.	1500
Extractable Cadmium (Cd)	mg/kg	0.3	N.D.	1.3
Extractable Chromium (III) (Cr III)	mg/kg	5	N.D.	37.5
Extractable Chromium (VI)(Cr VI)	mg/kg	0.02	N.D.	0.02
Extractable Mercury (Hg)	mg/kg	1	N.D.	7.5
Extractable Selenium (Se)	mg/kg	5	N.D.	37.5
Extractable Boron (B)	mg/kg	50	N.D.	1200
Extractable Cobalt (Co)	mg/kg	0.5	N.D.	10.5
Extractable Manganese (Mn)	mg/kg	50	N.D.	1200
Extractable Strontium (Sr)	mg/kg	50	N.D.	4500
Extractable Tin (Sn)	mg/kg	5	N.D.	15000
Extractable Zinc (Zn)	mg/kg	50	N.D.	3750
Extractable Copper (Cu)	mg/kg	50	N.D.	622.5
Extractable Aluminum (Al)	mg/kg	50	402	5625
Extractable Nickel (Ni)	mg/kg	10	N.D.	75
Extractable Organic Tin	mg/kg	0.02	N.D.	0.9

***** To be continued *****

STQ Testing Services Co., Ltd.

Add.:3F,B3,218 Xinghu St., Suzhou Industrial Park,China,215123

Tel.:+86/(0)512 87661878

Fax: +86/(0)512 87661802

Web:www.stq-cert.com

Technical service: TS@stq-cert.comCustomer service: CS@stq-cert.com



TEST REPORT

Reference No. : SZ2018011088-1E

Date : Feb. 07, 2018

Page No. : 10 of 21

Test Item(s)	Unit	MDL	Result				Category III
			10#	11# [▲]	12#	14# [▲]	
Extractable Lead (Pb)	mg/kg	10	N.D.	N.D.	N.D.	N.D.	23
Extractable Antimony (Sb)	mg/kg	10	N.D.	N.D.	N.D.	N.D.	560
Extractable Arsenic (As)	mg/kg	10	N.D.	N.D.	N.D.	N.D.	47
Extractable Barium (Ba)	mg/kg	50	N.D.	N.D.	N.D.	N.D.	18750
Extractable Cadmium (Cd)	mg/kg	10	N.D.	N.D.	N.D.	N.D.	17
Extractable Chromium (III) (Cr III)	mg/kg	5	N.D.	240	N.D.	N.D.	460
Extractable Chromium (VI)(Cr VI)	mg/kg	0.2	N.D.	N.D.	N.D.	N.D.	0.2
Extractable Mercury (Hg)	mg/kg	10	N.D.	N.D.	N.D.	N.D.	94
Extractable Selenium (Se)	mg/kg	10	N.D.	N.D.	N.D.	N.D.	460
Extractable Boron (B)	mg/kg	50	N.D.	N.D.	N.D.	N.D.	15000
Extractable Cobalt (Co)	mg/kg	10	N.D.	N.D.	N.D.	N.D.	130
Extractable Manganese (Mn)	mg/kg	50	N.D.	N.D.	N.D.	N.D.	15000
Extractable Strontium (Sr)	mg/kg	50	N.D.	N.D.	N.D.	N.D.	56000
Extractable Tin (Sn)	mg/kg	5	N.D.	N.D.	N.D.	N.D.	180000
Extractable Zinc (Zn)	mg/kg	50	N.D.	N.D.	N.D.	N.D.	46000
Extractable Copper (Cu)	mg/kg	50	N.D.	N.D.	N.D.	N.D.	7700
Extractable Aluminum (Al)	mg/kg	50	N.D.	N.D.	N.D.	N.D.	70000
Extractable Nickel (Ni)	mg/kg	10	N.D.	N.D.	N.D.	N.D.	930
Extractable Organic Tin	mg/kg	0.02	N.D.	N.D.	N.D.	N.D.	12

***** To be continued *****

STQ Testing Services Co., Ltd.

Add.:3F,B3,218 Xinghu St., Suzhou Industrial Park,China,215123

Tel.:+86/(0)512 87661878

Fax: +86/(0)512 87661802

Web:www.stq-cert.com

Technical service: TS@stq-cert.comCustomer service: CS@stq-cert.com

Limited Value for migration of certain elements:

Test Item(s)	Unit	Limited Value*		
		Category I	Category II	Category III
Extractable Lead (Pb)	mg/kg	2.0	0.5	23
Extractable Antimony (Sb)	mg/kg	45	11.3	560
Extractable Arsenic (As)	mg/kg	3.8	0.9	47
Extractable Barium (Ba)	mg/kg	1500	375	18750
Extractable Cadmium (Cd)	mg/kg	1.3	0.3	17
Extractable Chromium (III) (Cr III)	mg/kg	37.5	9.4	460
Extractable Chromium (VI)	mg/kg	0.02	0.005	0.2
Extractable Mercury (Hg)	mg/kg	7.5	1.9	94
Extractable Selenium (Se)	mg/kg	37.5	9.4	460
Extractable Boron (B)	mg/kg	1200	300	15000
Extractable Cobalt (Co)	mg/kg	10.5	2.6	130
Extractable Manganese (Mn)	mg/kg	1200	300	15000
Extractable Strontium (Sr)	mg/kg	4500	1125	56000
Extractable Tin (Sn)	mg/kg	15000	3750	180000
Extractable Zinc (Zn)	mg/kg	3750	938	46000
Extractable Copper (Cu)	mg/kg	622.5	156	7700
Extractable Aluminum (Al)	mg/kg	5625	1406	70000
Extractable Nickel (Ni)	mg/kg	75	18.8	930
Extractable Organic Tin	mg/kg	0.9	0.2	12

Remark: * The Limited value is based on European Directive 2009/48/EC and its subsequent amendments and EN 71 Part 3:2013+A2:2017.

Category I: Dry, brittle, powder-like or pliable materials

Category II: Liquid or sticky materials

Category III: Scrapped-off materials

***** To be continued *****

4. Phthalates Content

Test Method: With reference to EN 14372-2004, Analysis was performed by GC-MS.

(4-1) For all toys and childcare articles

Test Item(s)	Unit	MDL	Test Results			Limited Value**
			2# [▲]	3# [▲]	5# [▲]	
Dibutyl Phthalate((DBP)	%	0.005	N.D.	N.D.	N.D.	---
Benzylbutyl Phthalate(BBP)		0.005	N.D.	N.D.	N.D.	---
Di-(2-ethylhexyl)Phthalate(DEHP)		0.005	N.D.	N.D.	N.D.	---
Total (DBP+BBP+DEHP)		---	< 0.015	< 0.015	< 0.015	≤ 0.1

Test Item(s)	Unit	MDL	Test Results				Limited Value**
			6# [▲]	7# [▲]	8# [▲]	14# [▲]	
Dibutyl Phthalate((DBP)	%	0.005	N.D.	N.D.	N.D.	N.D.	---
Benzylbutyl Phthalate(BBP)		0.005	N.D.	N.D.	N.D.	N.D.	---
Di-(2-ethylhexyl)Phthalate(DEHP)		0.005	N.D.	N.D.	N.D.	N.D.	---
Total (DBP+BBP+DEHP)		---	< 0.015	< 0.015	< 0.015	< 0.015	≤ 0.1

(4-2) For toys and childcare articles that can be mouthed

Test Item(s)	Unit	MDL	Test Results			Limited Value**
			2# [▲]	3# [▲]	5# [▲]	
Di-iso-nonylphthalate(DINP)	%	0.010	N.D.	N.D.	N.D.	---
Di-n-octylphthalate(DNOP)		0.005	N.D.	N.D.	N.D.	---
Di-iso-decylphthalate(DIDP)		0.010	N.D.	N.D.	N.D.	---
Total (DINP+DNOP+DIDP)		---	< 0.025	< 0.025	< 0.025	≤ 0.1

***** To be continued *****

Test Item(s)	Unit	MDL	Test Results				Limited Value**
			6# [▲]	7# [▲]	8# [▲]	14# [▲]	
Di-iso-nonylphthalate(DINP)	%	0.010	N.D.	N.D.	N.D.	N.D.	---
Di-n-octylphthalate(DNOP)		0.005	N.D.	N.D.	N.D.	N.D.	---
Di-iso-decylphthalate(DIDP)		0.010	N.D.	N.D.	N.D.	N.D.	---
Total (DINP+DNOP+DIDP)		---	< 0.025	< 0.025	< 0.025	< 0.025	≤ 0.1

Remark: **The Limited value is based on REACH Annex XVII (entry 51&52).

- Note :**
- 1) % = Percentage by weight.
 - 2) N.D. = Not detected, less than MDL.
 - 3) "---" = Not Regulated.
 - 4) MDL = Method Detection Limit.
 - 5) [▲]As the client required, the sample was tested in mixture.

Test Part Description:

- 1# Writing Set
- 2# Transparent + Blue transparent + Green transparent box
- 3# White + Blue + Green plastic cover
- 4# Black + Blue + Green coating
- 5# White + Blue + Green plastic
- 6# White + Blue + Green plastic pen holder
- 7# Transparent plastic ruler with printing + Transparent plastic box + Black plastic
- 8# White eraser + Gray plastic nib + Transparent plastic cover
- 9# Black automatic pencil lead + Black pencil lead
- 10# Wood substrate
- 11# Silver metal screw + Silver metal blade + Silver metal screw
- 12# Gray metal
- 13# Kompass Pack
- 14# Green plastic + Blue plastic + Transparent plastic box

***** To be continued *****

SAMPLE PHOTOS



1#



1#



1#



1#



1#



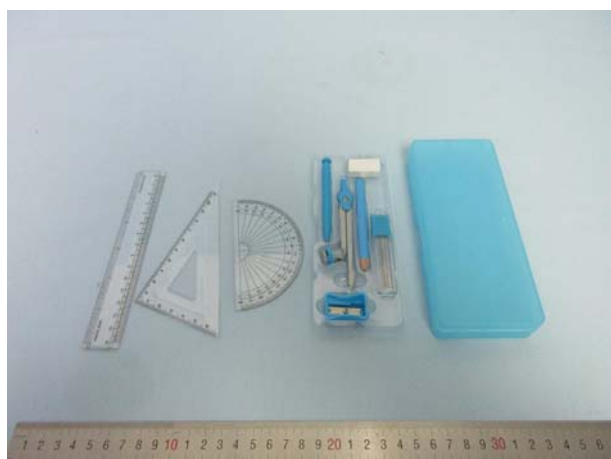
1#



1#



1#



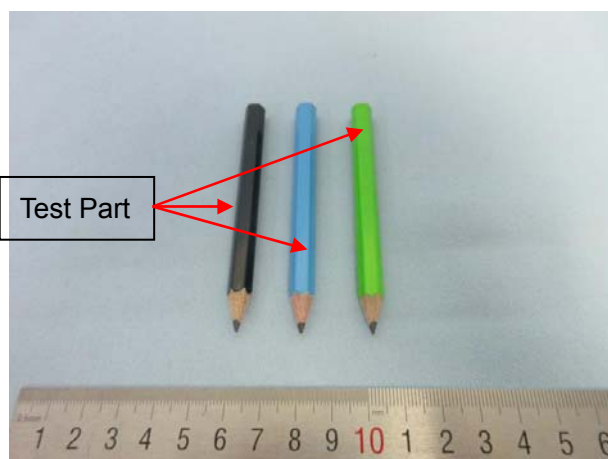
1#



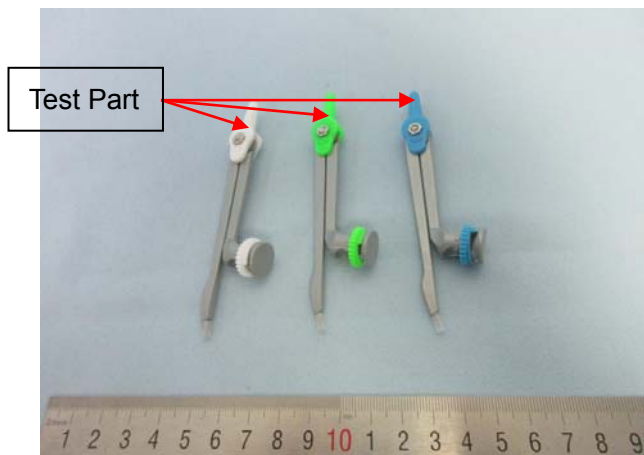
2#



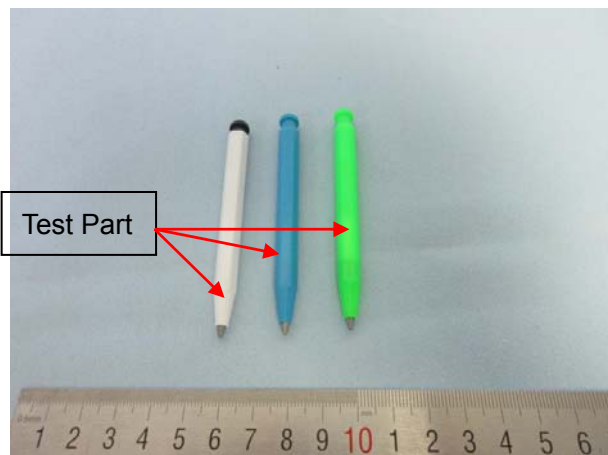
3#



4#



5#



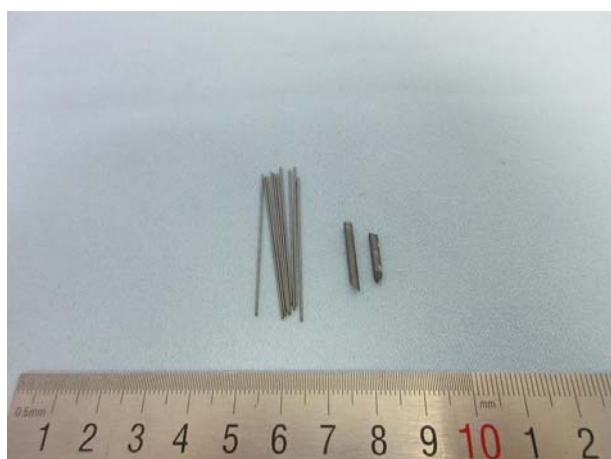
6#



7#



8#



9#



10#



11#



12#



13#



13#



13#



13#



13#



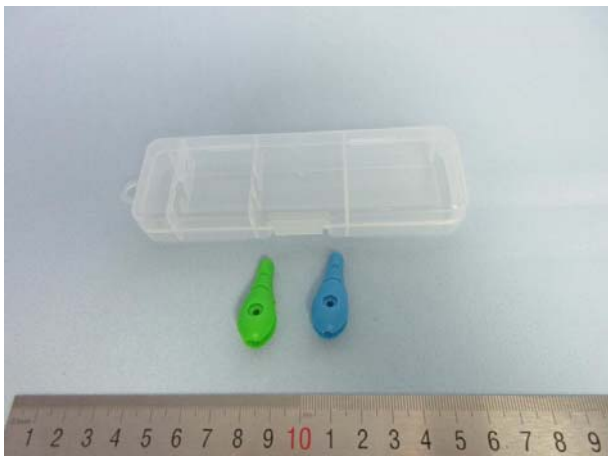
13#



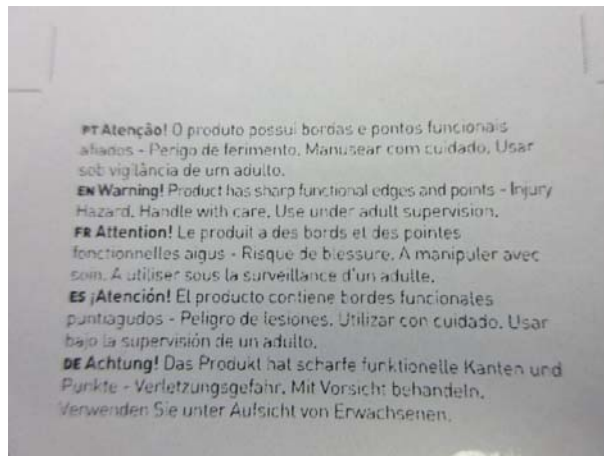
13#



13#



14#



Label

******* END OF REPORT *******



TEST REPORT

Reference No. : SZ2018011088-1E

Date : Feb. 07, 2018

Page No. : 20 of 21

GENERAL CONDITIONS OF SERVICES

STQ Testing Services Co.,Ltd. (hereinafter "STQ"), while reserving the right to decline, without giving any reason whatsoever, any request for the undertaking of a test or investigation, will carry out at the request of the clients the required test or investigation subject always to the following conditions:

1. STQ only acts for the person or body originating the instructions (the "Clients"). No other party is entitled to give instructions, particularly on the scope of testing or delivery of report or certificate, unless authorized by the Clients.
2. The Sample(s) to be tested or investigated shall be delivered at the costs of the Clients and in accordance with the requirements of STQ. Improper shipping, packaging, and labeling of the Sample(s) by the Client may result in incorrect testing results, STQ shall be under no obligation to the Clients. At the conclusion of the test or investigation, the Clients shall, if required by STQ, collect the Sample(s). In any event, if the Sample(s) are not collected by the Clients within 60 days from the issuance date of the test report (for perishable items such as food and water samples, the relevant period shall be the preserving period up to 15 days), STQ may at its discretion dispose of the Sample(s) without any compensation to the Clients.
3. The Clients shall always comply with the following before or during STQ providing its services:
 - a) provide sample(s) and relevant data, at the same time, guarantee the consistence of the sample(s)' name they declared with the sample(s) or the goods provided. Otherwise, STQ will not bear any relevant responsibilities;
 - b) giving timely instructions and adequate information to enable STQ to perform the services effectively;
 - c) supply, when requested by STQ, any equipment and personnel for the performance of the services;
 - d) take all necessary steps to eliminate or remedy any obstruction in the performance of the services;
 - e) inform STQ in advance of any hazards or dangers, actual or potential, associated with any order of samples or testing;
 - f) provide all necessary access for STQ's representative to enable the required services to be performed effectively;
 - g) ensure all essential steps are taken for safety of working conditions, sites and installations during the performance of services;
 - h) fully discharge all its liabilities under any contract like sales contract with a third party, whether or not a report or certificate has been issued by STQ, failing which STQ shall be under no obligation to the Clients.
4. Subject to STQ's accepting the Client's instructions, STQ will issue reports or certificates which reflect statements of opinion made with due care within the scope of instructions but STQ is not obliged to report upon any facts outside the instructions, if there were any dissidence about the report or certificate, the Client should provide the written declaration to STQ within 15 days after the date receiving the report or certificate, otherwise, STQ will not hear the case after the date limit.
5. STQ is irrevocably authorized by the Clients to deliver at its discretion the report or the certificate to any third party when instructed by the Clients or where it implicitly follows from circumstances, trade custom, usage or practice as determined by STQ.
6. A test report will be issued in confidence to the Clients and it will be strictly treated as such by STQ. It may not be reproduced either in its entirety or in part and it may not be used for advertising or other unauthorized purposes without the written consent of STQ. The Clients to whom the Report is issued may, however, show or send it, or a certified copy thereof prepared by STQ, to his customer, supplier or other persons directly concerned. STQ will not, without the consent of the Clients, enter into any discussion or correspondence with any third party concerning the contents of the report unless required by the relevant governmental authorities, laws or court orders.
7. Applicants wishing to use STQ's reports in court proceedings or arbitration shall inform STQ to that effect prior to submitting the sample for testing.
8. The report will refer only to the sample tested and will not apply to the bulk, unless the sampling has been carried out by STQ and is stated as such in the Report. Also, the report is only for reference.
9. Any documents containing engagements between the Clients and third parties like contracts of sale, letters of credit, bills of lading, etc. are regarded as information for STQ only and do not affect the scope of the services or the obligations accepted by STQ.
10. If the Clients do not specify the methods/standards to be applied, STQ will choose the appropriate ones and further information regarding the methods can be obtained by direct contact with STQ, for the in-house method, STQ will only provide the summary.
11. No liability shall be incurred by and no claim shall be made against STQ or its servants, agents, employees or independent contractors in respect of any loss or damage to any such materials, equipment and property occurring whilst at STQ or any work places in which the testing is carried out, or in the course of transit to or from STQ or the said work places, whether or not resulting from any acts, neglect or default on the part of any such servants, agents, employees or independent contractors of STQ.
12. STQ will not be liable, or accept responsibility for any loss or damage howsoever arising from the use of information contained in any of its reports or in any communication whatsoever about its said tests or investigations.
13. Subject to Clause 11 and 12, the total liability of STQ in respect of any claim of loss, damage or expense of whatsoever nature shall not exceed a total sum equal to two times the amount of the service fee payable in respect of the services directly related to such claim, and STQ's liability shall not include any indirect, special or consequential loss of the Clients.
14. In the event of STQ prevented by any cause outside STQ's control from performing any service for which an order has been given or an agreement made, the Clients shall pay to STQ:
 - a) the amount of all abortive expenditure actually made or incurred;
 - b) a proportion of the agreed fee or commission equal to the proportion (if any) of the service actually carried out by STQ, and STQ shall be relieved of all responsibility whatsoever for the partial or total non-performance of the required service.
15. STQ shall be discharged from all liabilities for all claims for loss, damage or expense unless suit is brought within one calendar year after the date of the performance by STQ of the service relating to the claim or in the event of any alleged non-performance within one year of the date when such service should have been completed.

STQ Testing Services Co., Ltd.

Add.: 3F, B3, 218 Xinghu St., Suzhou Industrial Park, China, 215123

Tel.: +86/(0)512 87661878

Fax: +86/(0)512 87661802

Web: www.stq-cert.com

Technical service: TS@stq-cert.com

Customer service: CS@stq-cert.com



TEST REPORT

Reference No. : SZ2018011088-1E

Date : Feb. 07, 2018

Page No. : 21 of 21

16. The Clients acknowledge that STQ does not, either by entering into a contract or by performing service, assume or undertake to discharge any duty of the Clients to any other persons. STQ is neither an insurer nor a guarantor and disclaims all liability in such capacity.
17. The Clients shall hold harmless and indemnify STQ and its officers, employees, agents or independent contractors against all claims made by any third party for loss, damage or expense of whatsoever nature including reasonable legal expenses relating to the performance or non- performance of any services to the extent that the aggregate of any such claims relating to any one service exceed the limits mentioned in Clause 13.
18. Any unauthorized alteration, forgery or falsification of the content or appearance of the report/certificate is unlawful and offenders may be prosecuted to the fullest extent of the law; in the event of improper use of the report, STQ reserves the right to withdraw it, and to adopt any other measures which may be appropriate.
19. Samples are deposited with and accepted by STQ on the basis that either they are insured by the Clients or the Clients assumes entire responsibility for loss through fire, theft, burglary or for damages arising in the course of analysis or handling, without recourse whatsoever to STQ or its servants, agent, employees or independent contractors.
20. If the requirements of the Clients require the analysis of samples by the Clients' or any third party's laboratory, STQ will only convey the result of the analysis without responsibility for its accuracy. If STQ is only able to witness an analysis by the Clients' or any third Party's laboratory STQ will only confirm that the correct sample has been analyzed without responsibility for the accuracy of any analysis or results.
21. In the event of any unforeseen additional time or costs being incurred in the course of carrying out any of its services, STQ shall be entitled to charge the Clients additional fees to reflect the additional time and costs incurred.
22. All rights (including but not limited to copyright) in any reports, certificates or other materials produced by STQ in the course of providing its services shall remain vested in STQ.
23. Unless otherwise agreed in writing, payment is to be made within 10 days from the date of Invoice or the date of the Debit Note, all charges rendered by STQ or interest will become due at the rate of three percent per month from the date of invoice until actual payment. The Clients are also responsible for settling all STQ's costs of collecting the charges owed, including legal fees.
24. Test results may be transmitted by electronic means at the Client's request. However, it should be noted that electronic transmission cannot guarantee the information contained will not be lost, delayed or intercepted by third party. STQ is not liable for any disclosure, error or omission in the content of such messages as a result of electronic transmission.
25. If necessary, STQ may subcontract part of or all tests to competent subcontractors. If no objection is raised at the time of the Clients submitting the application, STQ shall assume the Client's approval.
26. This report/certificate does not relieve sellers/suppliers from their contractual responsibility with regards to the quality/quantity of this delivery nor does it prejudice the Client's right to claim towards sellers/suppliers for compensation for any apparent and/or hidden defects not detected during STQ's random inspection or testing or audit.
27. STQ reserves the right to include Special Conditions in addition to the foregoing General Conditions if warranted by the particular circumstances of the required test or investigation [this clause is only effective when the other party has been informed].
28. The foregoing General Conditions shall in all respects be governed, construed, interpreted and operated in accordance with the relevant Chinese laws and regulations. Unless otherwise agreed, the arbitration shall take place in P. R. C
29. These General Condition have been drafted in Chinese and may be translated into other languages. In the event of any discrepancy, the Chinese version shall prevail.
30. In general sample will be stored for 60 days. But for liquid, powder, etc semi-product & fragile product, it will be stored only for 7 days.
31. The effective date of this "GENERAL CONDITIONS OF SERVICES" is 1st May of 2017 and Version 2.0.

STQ Testing Services Co., Ltd.

Add.: 3F, B3, 218 Xinghu St., Suzhou Industrial Park, China, 215123

Tel.: +86/(0)512 87661878

Fax: +86/(0)512 87661802

Web: www.stq-cert.com

Technical service: TS@stq-cert.com

Customer service: CS@stq-cert.com