



## ROHS TEST REPORT

**Report Reference No**..... : ZKT-2019063156R

**Date of issue**..... : Jul. 03, 2019

**Total number of pages**..... : 12

**Testing Laboratory**..... : **Shenzhen ZKT Technology Co., Ltd.**

**Address**..... : 2F, Building 1, Maozhoushan Industrial Park, Houting Community, Shajing Street, Bao'an District, Shenzhen, China

**Applicant's name**..... : **Paul Stricker S.A**

**Address**..... : Núcleo Ind. Murtede, Lt 5 Murtede 3060-372 Portugal

**Test Requested:**

- |     |   |                           |
|-----|---|---------------------------|
| (1) | Heavy Metals and Flame Retardants Content – European Council Directive 2011/65/EU on the Restriction of the Use of Certain Hazardous Substances in Electrical and Electronic Equipment (RoHS)             | <b>Conclusion</b><br>PASS |
| (2) | Phthalates content – European Council Directive 2011/65/EU and Change-Directive (EU) 2015/863 on the Restriction of the Use of Certain Hazardous Substances in Electrical and Electronic Equipment (RoHS) |                           |

**Conclusion**  
PASS

PASS

**Test Report Form No**..... : --

**Test Report Form(s) Originator**..... : ZKT Testing

**Master TRF**..... : Dated: 2017-06

**This test report is specially limited to the above client company and product model only. It may not be duplicated without prior written consent of ZKT Test.**

**Test item description**..... : **Bluetooth headphone**

**Trade Mark**..... : N/A

**Manufacturer**..... : [REDACTED]

**Model/Type reference**..... : 97365



**Testing procedure and testing location:**

**Testing Laboratory.....: Shenzhen ZKT Technology Co., Ltd.**

**Address.....: 2F, Building 1, Maozhousha Industrial Park, Houting Community, Shajing Street, Bao'an District, Shenzhen, China**

**Date of Test.....: Jun. 26, 2019 to Jul. 03, 2019**

**Tested by (name + signature).....: Peter Huang**

**Reviewer (name + signature).....: Simon Gong**

**Approved (name + signature).....: Awen He**





## Test Method:

Heavy Metals and Flame Retardants Content – European Council Directive 2011/65/EU on the Restriction of the Use of Certain Hazardous Substances in Electrical and Electronic Equipment (RoHS)

Testing item	Pretreatment method	Measuring instrument	MDL
Lead(Pb)	EN 62321-5:2014	ICP-OES	2 mg/kg
Cadmium(Cd)	EN 62321-5:2014	ICP-OES	2 mg/kg
Mercury(Hg)	EN 62321-4:2014	ICP-OES	2 mg/kg
Chromium(Cr VI)	EN 62321:2012	UV-Vis	2 mg/kg
PBBs/ PBDEs	EN 62321:2012	PY-GC-MS	5 mg/kg

Testing item	Pretreatment method	Measuring instrument	MDL
HBCDD	EPA3540:1996	GC-MS	10 mg/kg

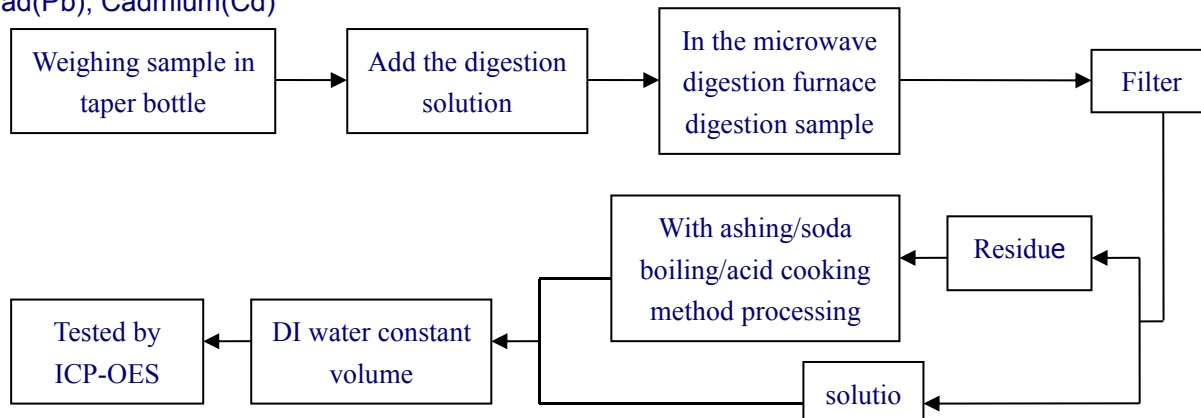
Phthalates content – European Council Directive 2011/65/EU and Change-Directive (EU) 2015/863 on the Restriction of the Use of Certain Hazardous Substances in Electrical and Electronic Equipment (RoHS) Test Method: Sample was extracted with organic solvent and then analyzed by Gas Chromatograph Mass Spectrometer.

Testing item	Pretreatment method	Measuring instrument	MDL
DEHP/DBP/BBP/ DIBP	EN 14372:2004	GC-MS	0.003 mg/kg

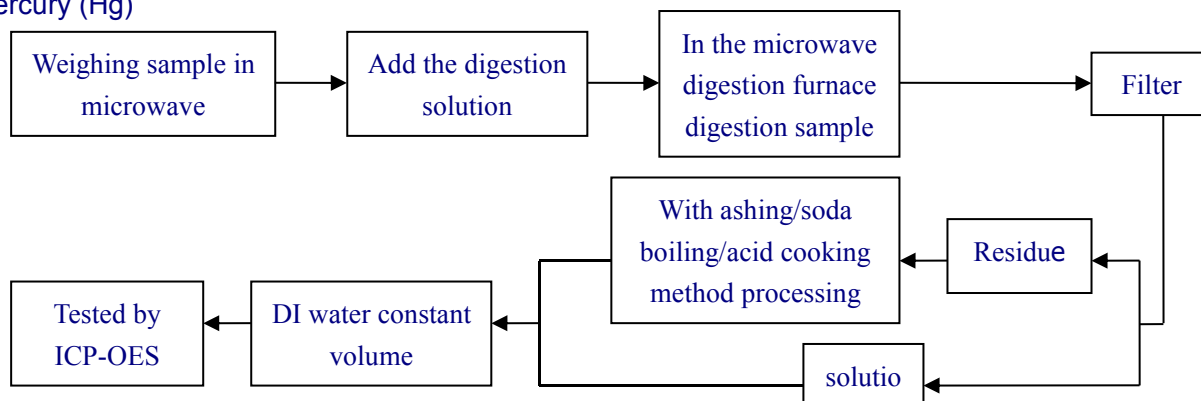


## Test Flow:

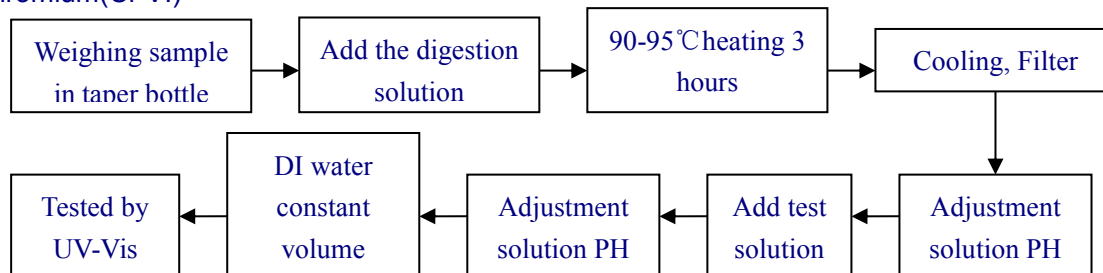
### 1. Lead(Pb), Cadmium(Cd)



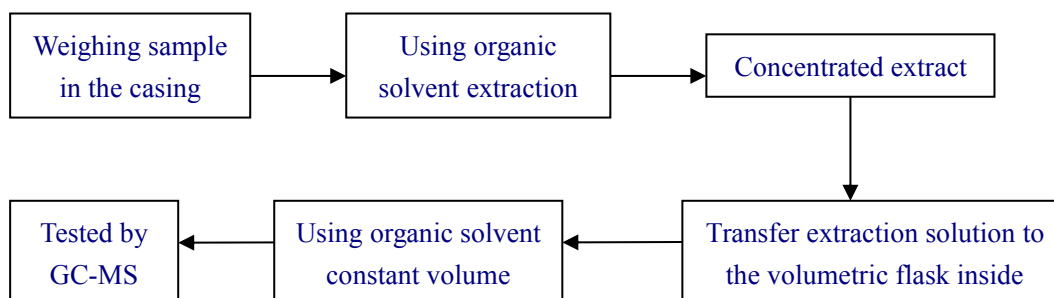
### 2. Mercury (Hg)



### 3. Chromium(Cr VI)

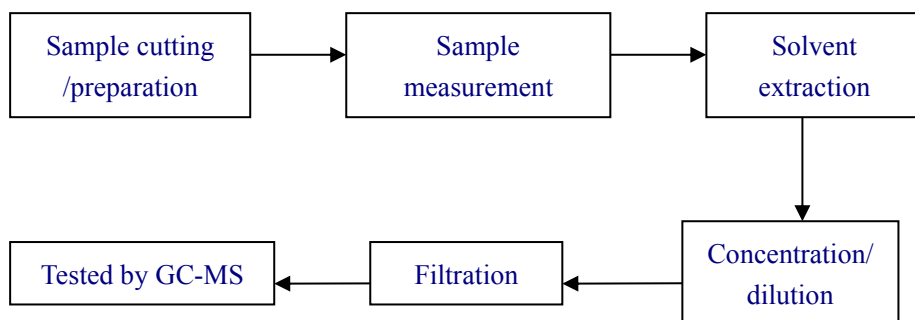


### 4. PBBs/ PBDEs





#### 5. HBCDD/ DEHP/ BBP/ DBP/ DIBP



**Test Results:**

Testing Item	Unit	ROHS Limit	Result					
			1	2	3	4	5	6
Lead(Pb)	mg/kg	1000	N.D.	N.D.	N.D.	N.D.	N.D.	N.D.
Cadmium(Cd)	mg/kg	100	N.D.	N.D.	N.D.	N.D.	N.D.	N.D.
Mercury(Hg)	mg/kg	1000	N.D.	N.D.	N.D.	N.D.	N.D.	N.D.
Chromium(Cr VI)	mg/kg	1000	N.D.	N.D.	N.D.	N.D.	N.D.	N.D.
Sum of PBBs/ PBDEs	mg/kg	1000	N.D.	N.D.	N.D.	N.D.	N.D.	N.D.
Monobromobiphenyl	mg/kg	/	N.D.	N.D.	N.D.	N.D.	N.D.	N.D.
Dibromobiphenyl	mg/kg	/	N.D.	N.D.	N.D.	N.D.	N.D.	N.D.
Tribromobiphenyl	mg/kg	/	N.D.	N.D.	N.D.	N.D.	N.D.	N.D.
Tetrabromobiphenyl	mg/kg	/	N.D.	N.D.	N.D.	N.D.	N.D.	N.D.
Pentabromobiphenyl	mg/kg	/	N.D.	N.D.	N.D.	N.D.	N.D.	N.D.
Hexabromobiphenyl	mg/kg	/	N.D.	N.D.	N.D.	N.D.	N.D.	N.D.
Heptabromobiphenyl	mg/kg	/	N.D.	N.D.	N.D.	N.D.	N.D.	N.D.
Octabromobiphenyl	mg/kg	/	N.D.	N.D.	N.D.	N.D.	N.D.	N.D.
Nonabromobiphenyl	mg/kg	/	N.D.	N.D.	N.D.	N.D.	N.D.	N.D.
Decabromobiphenyl	mg/kg	/	N.D.	N.D.	N.D.	N.D.	N.D.	N.D.
Monobromodiphenyl ether	mg/kg	/	N.D.	N.D.	N.D.	N.D.	N.D.	N.D.
Dibromodiphenyl ether	mg/kg	/	N.D.	N.D.	N.D.	N.D.	N.D.	N.D.
Tribromodiphenyl ether	mg/kg	/	N.D.	N.D.	N.D.	N.D.	N.D.	N.D.
Tetrabromodiphenyl ether	mg/kg	/	N.D.	N.D.	N.D.	N.D.	N.D.	N.D.
Pentabromodiphenyl ether	mg/kg	/	N.D.	N.D.	N.D.	N.D.	N.D.	N.D.
Hexabromodiphenyl ether	mg/kg	/	N.D.	N.D.	N.D.	N.D.	N.D.	N.D.
Heptabromodiphenyl ether	mg/kg	/	N.D.	N.D.	N.D.	N.D.	N.D.	N.D.
Octabromodiphenyl ether	mg/kg	/	N.D.	N.D.	N.D.	N.D.	N.D.	N.D.
Nonabromodiphenyl ether	mg/kg	/	N.D.	N.D.	N.D.	N.D.	N.D.	N.D.
Decabromodiphenyl ether	mg/kg	/	N.D.	N.D.	N.D.	N.D.	N.D.	N.D.
Hexabromocyclododecane (HBCDD)	mg/kg	1000	N.D.	N.D.	N.D.	N.D.	N.D.	N.D.
Bis-(2-ethylhexyl) Phthalate (DEHP)	mg/kg	1000	N.D.	N.D.	N.D.	N.D.	N.D.	N.D.
Benzylbutyl Phthalate (BBP)	mg/kg	1000	N.D.	N.D.	N.D.	N.D.	N.D.	N.D.
Dibutyl Phthalate (DBP)	mg/kg	1000	N.D.	N.D.	N.D.	N.D.	N.D.	N.D.
Di-isobutyl phthalate (DIBP)	mg/kg	1000	N.D.	N.D.	N.D.	N.D.	N.D.	N.D.

Sample Description:

- 1 BLACK PLASTIC
- 2 WHITE PLASTIC
- 3 TRANSLUCENT PLASTIC



4 GREY PLASTIC

5 SPONGE

6 SCREW

Testing Item	Unit	ROHS Limit	Result					
			7	8	9	10	11	12
Lead(Pb)	mg/kg	1000	N.D.	N.D.	N.D.	N.D.	N.D.	N.D.
Cadmium(Cd)	mg/kg	100	N.D.	N.D.	N.D.	N.D.	N.D.	N.D.
Mercury(Hg)	mg/kg	1000	N.D.	N.D.	N.D.	N.D.	N.D.	N.D.
Chromium(Cr VI)	mg/kg	1000	N.D.	N.D.	N.D.	N.D.	N.D.	N.D.
Sum of PBBs/ PBDEs	mg/kg	1000	N.D.	N.D.	N.D.	N.D.	N.D.	N.D.
Monobromobiphenyl	mg/kg	/	N.D.	N.D.	N.D.	N.D.	N.D.	N.D.
Dibromobiphenyl	mg/kg	/	N.D.	N.D.	N.D.	N.D.	N.D.	N.D.
Tribromobiphenyl	mg/kg	/	N.D.	N.D.	N.D.	N.D.	N.D.	N.D.
Tetrabromobiphenyl	mg/kg	/	N.D.	N.D.	N.D.	N.D.	N.D.	N.D.
Pentabromobiphenyl	mg/kg	/	N.D.	N.D.	N.D.	N.D.	N.D.	N.D.
Hexabromobiphenyl	mg/kg	/	N.D.	N.D.	N.D.	N.D.	N.D.	N.D.
Heptabromobiphenyl	mg/kg	/	N.D.	N.D.	N.D.	N.D.	N.D.	N.D.
Octabromobiphenyl	mg/kg	/	N.D.	N.D.	N.D.	N.D.	N.D.	N.D.
Nonabromobiphenyl	mg/kg	/	N.D.	N.D.	N.D.	N.D.	N.D.	N.D.
Decabromobiphenyl	mg/kg	/	N.D.	N.D.	N.D.	N.D.	N.D.	N.D.
Monobromodiphenyl ether	mg/kg	/	N.D.	N.D.	N.D.	N.D.	N.D.	N.D.
Dibromodiphenyl ether	mg/kg	/	N.D.	N.D.	N.D.	N.D.	N.D.	N.D.
Tribromodiphenyl ether	mg/kg	/	N.D.	N.D.	N.D.	N.D.	N.D.	N.D.
Tetrabromodiphenyl ether	mg/kg	/	N.D.	N.D.	N.D.	N.D.	N.D.	N.D.
Pentabromodiphenyl ether	mg/kg	/	N.D.	N.D.	N.D.	N.D.	N.D.	N.D.
Hexabromodiphenyl ether	mg/kg	/	N.D.	N.D.	N.D.	N.D.	N.D.	N.D.
Heptabromodiphenyl ether	mg/kg	/	N.D.	N.D.	N.D.	N.D.	N.D.	N.D.
Octabromodiphenyl ether	mg/kg	/	N.D.	N.D.	N.D.	N.D.	N.D.	N.D.
Nonabromodiphenyl ether	mg/kg	/	N.D.	N.D.	N.D.	N.D.	N.D.	N.D.
Decabromodiphenyl ether	mg/kg	/	N.D.	N.D.	N.D.	N.D.	N.D.	N.D.
Hexabromocyclododecane (HBCDD)	mg/kg	1000	N.D.	N.D.	N.D.	N.D.	N.D.	N.D.
Bis-(2-ethylhexyl) Phthalate (DEHP)	mg/kg	1000	N.D.	N.D.	N.D.	N.D.	N.D.	N.D.
Benzylbutyl Phthalate (BBP)	mg/kg	1000	N.D.	N.D.	N.D.	N.D.	N.D.	N.D.
Dibutyl Phthalate (DBP)	mg/kg	1000	N.D.	N.D.	N.D.	N.D.	N.D.	N.D.
Di-isobutyl phthalate (DIBP)	mg/kg	1000	N.D.	N.D.	N.D.	N.D.	N.D.	N.D.

Sample Description:

7 POLYMER LITHIUM ION BATTERY

8 WHITE WIRE



9 BLACK WIRE

10 RED WIRE

11 PCB

12 SMD DIODE

Testing Item	Unit	ROHS Limit	Result					
			13	14	15	16	/	/
Lead(Pb)	mg/kg	1000	N.D.	N.D.	N.D.	N.D.	/	/
Cadmium(Cd)	mg/kg	100	N.D.	N.D.	N.D.	N.D.	/	/
Mercury(Hg)	mg/kg	1000	N.D.	N.D.	N.D.	N.D.	/	/
Chromium(Cr VI)	mg/kg	1000	N.D.	N.D.	N.D.	N.D.	/	/
Sum of PBBs/ PBDEs	mg/kg	1000	N.D.	N.D.	N.D.	N.D.	/	/
Monobromobiphenyl	mg/kg	/	N.D.	N.D.	N.D.	N.D.	/	/
Dibromobiphenyl	mg/kg	/	N.D.	N.D.	N.D.	N.D.	/	/
Tribromobiphenyl	mg/kg	/	N.D.	N.D.	N.D.	N.D.	/	/
Tetrabromobiphenyl	mg/kg	/	N.D.	N.D.	N.D.	N.D.	/	/
Pentabromobiphenyl	mg/kg	/	N.D.	N.D.	N.D.	N.D.	/	/
Hexabromobiphenyl	mg/kg	/	N.D.	N.D.	N.D.	N.D.	/	/
Heptabromobiphenyl	mg/kg	/	N.D.	N.D.	N.D.	N.D.	/	/
Octabromobiphenyl	mg/kg	/	N.D.	N.D.	N.D.	N.D.	/	/
Nonabromobiphenyl	mg/kg	/	N.D.	N.D.	N.D.	N.D.	/	/
Decabromobiphenyl	mg/kg	/	N.D.	N.D.	N.D.	N.D.	/	/
Monobromodiphenyl ether	mg/kg	/	N.D.	N.D.	N.D.	N.D.	/	/
Dibromodiphenyl ether	mg/kg	/	N.D.	N.D.	N.D.	N.D.	/	/
Tribromodiphenyl ether	mg/kg	/	N.D.	N.D.	N.D.	N.D.	/	/
Tetrabromodiphenyl ether	mg/kg	/	N.D.	N.D.	N.D.	N.D.	/	/
Pentabromodiphenyl ether	mg/kg	/	N.D.	N.D.	N.D.	N.D.	/	/
Hexabromodiphenyl ether	mg/kg	/	N.D.	N.D.	N.D.	N.D.	/	/
Heptabromodiphenyl ether	mg/kg	/	N.D.	N.D.	N.D.	N.D.	/	/
Octabromodiphenyl ether	mg/kg	/	N.D.	N.D.	N.D.	N.D.	/	/
Nonabromodiphenyl ether	mg/kg	/	N.D.	N.D.	N.D.	N.D.	/	/
Decabromodiphenyl ether	mg/kg	/	N.D.	N.D.	N.D.	N.D.	/	/
Hexabromocyclododecane (HBCDD)	mg/kg	1000	N.D.	N.D.	N.D.	N.D.	/	/
Bis-(2-ethylhexyl) Phthalate (DEHP)	mg/kg	1000	N.D.	N.D.	N.D.	N.D.	/	/
Benzylbutyl Phthalate (BBP)	mg/kg	1000	N.D.	N.D.	N.D.	N.D.	/	/
Dibutyl Phthalate (DBP)	mg/kg	1000	N.D.	N.D.	N.D.	N.D.	/	/
Di-isobutyl phthalate (DIBP)	mg/kg	1000	N.D.	N.D.	N.D.	N.D.	/	/

13 SMD CAPACITOR

14 SMD RESISTOR





15 IC

16 CRYSTAL

Notes:

1mg/kg=1ppm = 0.0001%

N.D. = Not Detected (<MDL)

MDL = Method Detection Limit

/=Not Regulated

---=Not Applicable

## Breakdown of product

## ANNEX A: Photo-documentation

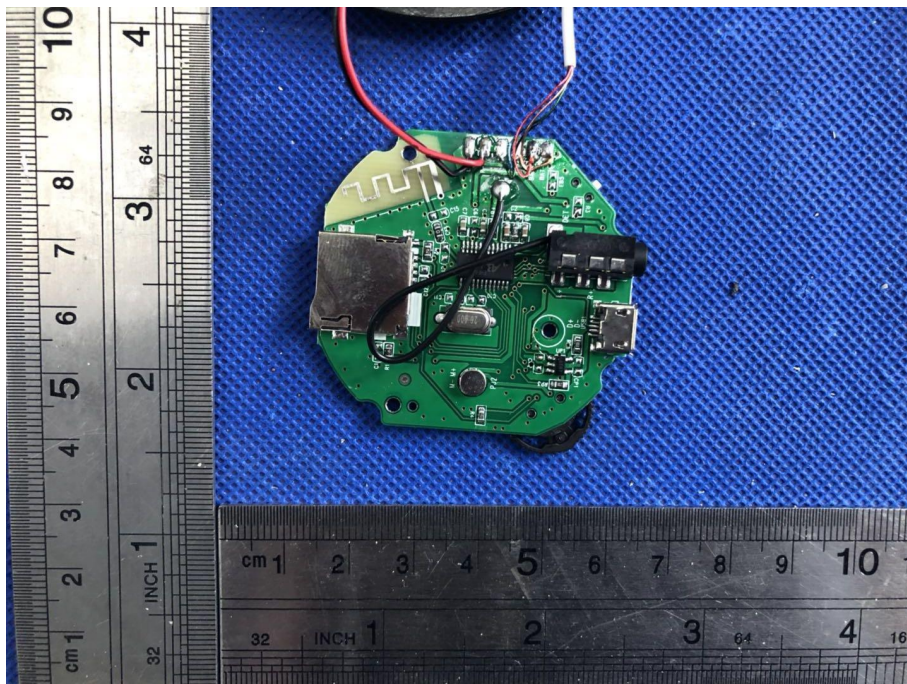
EUT Photo 1

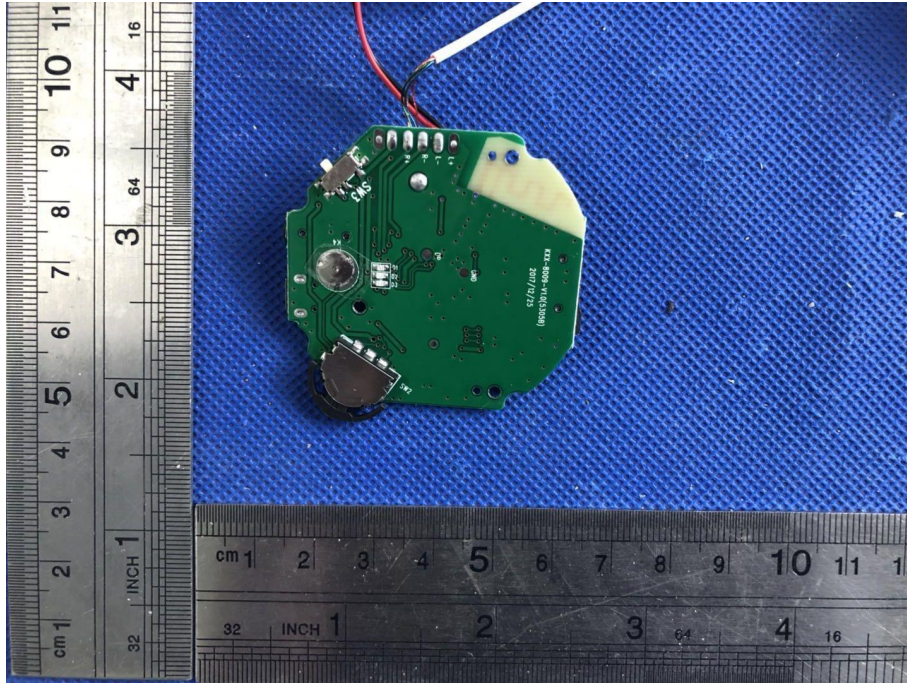


EUT Photo 2





**EUT Photo 3****EUT Photo 4**

**EUT Photo 5**

\*\*\*\*\* END OF REPORT \*\*\*\*\*