



## TEST REPORT

Reference No. : SZ2016110404-1E

Date : Dec. 12, 2016

Page No.: 1 of 12


Client : Paul Stricker SA  
Address : N.I. Murtede, It5 - 3060-372 Murtede - Portugal


The following merchandise was (were) submitted and identified by the client as:

Name of Product : 98219 Inflatable ball, 98263 Inflatable ball, 98274 Inflatable ball,  
98259/98260 Inflatable ball, 98251 Inflatable armband, 98293 Inflatable pillow,  
58315 Phone pouch, 98316 Tablet pouch  
Test Model : /  
Model May Cover : /  
Labeled Age Grading: 3+ years  
Applicant's Specified  
Age Group for Testing : 3+ years  
Age Grading for Test: 3+ years  
Sample Received : Dec. 07, 2016  
Test Period : Dec. 07, 2016 - Dec. 12, 2016  
Test Specification and Conclusion:

As requested by the client, to do the following test items:

Requirement:	Conclusion:
1. Mechanical and Physical Properties according to EN71 Part 1:2014	PASS
2. Flammability according to EN71 Part 2:2011+A1:2014	PASS
3. Migration of Certain Element according to EN 71-3:2013+A1:2014 & 2009/48/EC	PASS
4. Phthalate content according to REACH Annex XVII (entry 51&52)	PASS

Prepared By :   
Ada. Wang  
Testing Engineer

Reviewed By :   
Cookie. Chen  
Project Principal

Issued By :   
Kevin. Chen  
Lab Manager

STQ Testing Services Co., Ltd.

Add.:3F,B3,218 Xinghu St., Suzhou Industrial Park,China,215123

Tel.:+86/(0)512 87661878

Fax: +86/(0)512 87661802

Web:www.stq-cert.com

Technical service: [TS@stq-cert.com](mailto:TS@stq-cert.com)

Customer service: [CS@stq-cert.com](mailto:CS@stq-cert.com)

## TEST RESULTS:

### 1. European Standard-Safety of Toys: EN71 Part 1: 2014-Mechanical and Physical Properties

Test Items		Test Results
		1#
4.1	Material	PASS
4.2	Assembly	N/A
4.3	Flexible plastic sheeting	PASS
4.4	Toy bags	N/A
4.5	Glass	N/A
4.6	Expanding materials	N/A
4.7	Edges	PASS
4.8	Points and wires	PASS
4.9	Protruding parts	N/A
4.10	Parts moving against each other	N/A
4.10.1	Folding and slide mechanism	N/A
4.10.2	Driving mechanisms	N/A
4.10.3	Hinges	N/A
4.10.4	Spring	N/A
4.11	Mouth-actuated toys	N/A
4.12	Balloons	N/A
4.13	Cords of toy kites and other flying toys	N/A
4.14	Enclosures	
4.14.1	Toys which a children can enter	N/A
4.14.2	Masks and helmets	N/A
4.15	Toys intended to bear the mass of a child	
4.15.1	Toys propelled by the child or by other means	N/A
4.15.2	Free-wheeling toy bicycles	N/A
4.15.3	Rocking horses and similar toys	N/A
4.15.4	Toys not propelled by a child	N/A
4.15.5	Toys scooters	N/A
4.16	Heavy immobile toys	N/A
4.17	Projectiles	
4.17.1	General	N/A
4.17.2	Projectile toys without stored energy	N/A
4.17.3	Projectile toys with stored energy	N/A
4.17.4	Bows and arrows	N/A
4.18	Aquatic toys and inflatable toys	PASS

STQ Testing Services Co., Ltd.

Add.:3F,B3,218 Xinghu St., Suzhou Industrial Park,China,215123

Tel.:+86/(0)512 87661878

Fax: +86/(0)512 87661802

Web:www.stq-cert.com

Technical service: [TS@stq-cert.com](mailto:TS@stq-cert.com)

Customer service: [CS@stq-cert.com](mailto:CS@stq-cert.com)

4.19	Percussion caps specifically designed for use in toys and toys using percussion caps	N/A
4.20	Acoustics	N/A
4.21	Toys containing a heat source	N/A
4.22	Small balls	N/A
4.23	Magnets	N/A
4.23.1	General	N/A
4.23.2	Toys other than magnetic/electrical experimental sets	N/A
4.23.3	Magnetic/ electrical experimental sets	N/A
4.24	Yo-yo balls	N/A
4.25	Toys attached to food	N/A

Test Items		Test Results
		1#
5.	Toys intended for children under 36 months	
5.1	General requirements	N/A
5.2	Soft-filled toys and soft-filled parts of a toy	N/A
5.3	Plastic sheeting	N/A
5.3	Cord, chains and electrical cables in toys	N/A
5.5	Liquid-filled toys	N/A
5.6	Speed limitation of electrically-driven ride-on toys	N/A
5.7	Glass and porcelain	N/A
5.8	Shape and size of certain toys	N/A
5.9	Toys comprising monofilament fibres	N/A
5.10	Small balls	N/A
5.11	Play figures	N/A
5.12	Hemispheric-shaped toys	N/A
5.13	Suction cups	N/A
5.14	Straps intended to be worn fully or partially around the neck	N/A

Test Items	Test Results
	1#
6. Packaging	N/A

# TEST REPORT

Reference No. : SZ2016110404-1E

Date : Dec. 12, 2016

Page No.: 4 of 12

Test Items	Test Results
	1#
7. Warnings, markings and instructions for use Tracking information [CE mark, importer / manufacturer mark (name, address), product identification]	See remark
7.1 General	N/A
7.2 Toys not intended for children under 36 months	N/A
7.3 Latex balloons	N/A
7.4 Aquatic toys	N/A
7.5 Functional toys	N/A
7.6 Hazardous sharp functional edges and points	N/A
7.7 Projectiles	N/A
7.8 Imitation protective masks and helmets	N/A
7.9 Toy kites	N/A
7.10 Roller skates and toy skateboards	N/A
7.11 Toys intended to be strung across a cradle,cot,or perambulator	N/A
7.12 Liquid filled tethers	N/A
7.13 Percussion caps specifically designed for use in toys	N/A
7.14 Acoustics	N/A
7.15 Toys bicycle	N/A
7.16 Toys intended to bear the mass of a child	N/A
7.17 Toys comprising monofilament fibers	N/A
7.18 Toy scooters	N/A
7.19 Rocking horses and similar toys	N/A
7.20 Magnetic/electrical experimental sets	N/A
7.21 Toys with electrical cables exceeding 300mm in length	N/A
7.22 Toys with cords or chains intended for children of 18 months and over but under 36 months	N/A

**Remark:** It is drawn to your attention that the product identification number, name and address of manufacturer and importer in EEC country together with CE-marking was not found on the product.

\*\*\*\*\* To be continued \*\*\*\*\*



## TEST REPORT

Reference No. : SZ2016110404-1E

Date : Dec. 12, 2016

Page No.: 5 of 12

### 2. European Standard-Safety of Toys: EN71 Part 2: 2011+A1:2014-Flammability

Test Items	Test Results
	1#
4.1 General Requirements	PASS
4.2 Toys to be worn on the head	N/A
4.3 Toy disguise costumes and toys intended to be worn by a child in play	N/A
4.4 Toys intended to be entered by a child	N/A
4.5 Soft filled toys(animals and dolls, etc)with a piled or textile surface	N/A

\*\*\*\*\* To be continued \*\*\*\*\*

### 3. European Standard-Safety of Toys:EN71 part 3:2013+A1:2014 Migration of Certain Element

**Test Method:** Extractable Chromium(VI)& Extractable Chromium (III) – With reference to EN 71 Part 3:2013+A1:2014, analysis was performed by HPLC-ICP-MS.

Elements – With reference to EN 71 Part 3:2013+A1:2014, analysis was performed by ICP-MS.

Extractable Organic Tin –With reference to EN 71 Part 3:2013+A1:2014, analysis was performed by GC-MS.

Test Item(s)	Unit	MDL	Result			Category III
			2# <sup>▲</sup>	3# <sup>▲</sup>	4# <sup>▲</sup>	
Extractable Lead (Pb)	mg/kg	10	N.D.	N.D.	N.D.	160
Extractable Antimony (Sb)	mg/kg	10	N.D.	N.D.	N.D.	560
Extractable Arsenic (As)	mg/kg	10	N.D.	N.D.	N.D.	47
Extractable Barium (Ba)	mg/kg	50	N.D.	N.D.	N.D.	18750
Extractable Cadmium (Cd)	mg/kg	10	N.D.	N.D.	N.D.	17
Extractable Chromium (III) (Cr III)	mg/kg	5	N.D.	N.D.	N.D.	460
Extractable Chromium (VI)(Cr VI)	mg/kg	0.2	N.D.	N.D.	N.D.	0.2
Extractable Mercury (Hg)	mg/kg	10	N.D.	N.D.	N.D.	94
Extractable Selenium (Se)	mg/kg	10	N.D.	N.D.	N.D.	460
Extractable Boron (B)	mg/kg	50	N.D.	N.D.	N.D.	15000
Extractable Cobalt (Co)	mg/kg	10	N.D.	N.D.	N.D.	130
Extractable Manganese (Mn)	mg/kg	50	N.D.	N.D.	N.D.	15000
Extractable Strontium (Sr)	mg/kg	50	N.D.	N.D.	N.D.	56000
Extractable Tin (Sn)	mg/kg	5	N.D.	N.D.	N.D.	180000
Extractable Zinc (Zn)	mg/kg	50	N.D.	N.D.	N.D.	46000
Extractable Copper (Cu)	mg/kg	50	N.D.	N.D.	N.D.	7700
Extractable Aluminum (Al)	mg/kg	50	N.D.	N.D.	N.D.	70000
Extractable Nickel (Ni)	mg/kg	10	N.D.	N.D.	N.D.	930
Extractable Organic Tin	mg/kg	0.02	N.D.	N.D.	N.D.	12

\*\*\*\*\* To be continued \*\*\*\*\*



## TEST REPORT

Reference No. : SZ2016110404-1E

Date : Dec. 12, 2016

Page No.: 7 of 12

Test Item(s)	Unit	MDL	Result				Category III
			5# <sup>▲</sup>	6# <sup>▲</sup>	7# <sup>▲</sup>	8#	
Extractable Lead (Pb)	mg/kg	10	N.D.	N.D.	N.D.	N.D.	160
Extractable Antimony (Sb)	mg/kg	10	N.D.	N.D.	N.D.	N.D.	560
Extractable Arsenic (As)	mg/kg	10	N.D.	N.D.	N.D.	N.D.	47
Extractable Barium (Ba)	mg/kg	50	N.D.	N.D.	N.D.	N.D.	18750
Extractable Cadmium (Cd)	mg/kg	10	N.D.	N.D.	N.D.	N.D.	17
Extractable Chromium (III) (Cr III)	mg/kg	5	N.D.	N.D.	N.D.	N.D.	460
Extractable Chromium (VI)(Cr VI)	mg/kg	0.2	N.D.	N.D.	N.D.	N.D.	0.2
Extractable Mercury (Hg)	mg/kg	10	N.D.	N.D.	N.D.	N.D.	94
Extractable Selenium (Se)	mg/kg	10	N.D.	N.D.	N.D.	N.D.	460
Extractable Boron (B)	mg/kg	50	N.D.	N.D.	N.D.	N.D.	15000
Extractable Cobalt (Co)	mg/kg	10	N.D.	N.D.	N.D.	N.D.	130
Extractable Manganese (Mn)	mg/kg	50	N.D.	N.D.	N.D.	N.D.	15000
Extractable Strontium (Sr)	mg/kg	50	N.D.	N.D.	N.D.	N.D.	56000
Extractable Tin (Sn)	mg/kg	5	N.D.	N.D.	N.D.	N.D.	180000
Extractable Zinc (Zn)	mg/kg	50	N.D.	N.D.	N.D.	N.D.	46000
Extractable Copper (Cu)	mg/kg	50	N.D.	N.D.	N.D.	N.D.	7700
Extractable Aluminum (Al)	mg/kg	50	N.D.	N.D.	N.D.	N.D.	70000
Extractable Nickel (Ni)	mg/kg	10	N.D.	N.D.	N.D.	16	930
Extractable Organic Tin	mg/kg	0.02	N.D.	N.D.	N.D.	N.D.	12

\*\*\*\*\* To be continued \*\*\*\*\*

STQ Testing Services Co., Ltd.

Add.:3F,B3,218 Xinghu St., Suzhou Industrial Park,China,215123

Tel.:+86/(0)512 87661878

Fax: +86/(0)512 87661802

Web:www.stq-cert.com

Technical service: [TS@stq-cert.com](mailto:TS@stq-cert.com)Customer service: [CS@stq-cert.com](mailto:CS@stq-cert.com)

**Limited Value for migration of certain elements:**

Test Item(s)	Unit	Limited Value*		
		Category I	Category II	Category III
Extractable Lead (Pb)	mg/kg	13.5	3.4	160
Extractable Antimony (Sb)	mg/kg	45	11.3	560
Extractable Arsenic (As)	mg/kg	3.8	0.9	47
Extractable Barium (Ba)	mg/kg	1500	375	18750
Extractable Cadmium (Cd)	mg/kg	1.3	0.3	17
Extractable Chromium (III) (Cr III)	mg/kg	37.5	9.4	460
Extractable Chromium (VI)	mg/kg	0.02	0.005	0.2
Extractable Mercury (Hg)	mg/kg	7.5	1.9	94
Extractable Selenium (Se)	mg/kg	37.5	9.4	460
Extractable Boron (B)	mg/kg	1200	300	15000
Extractable Cobalt (Co)	mg/kg	10.5	2.6	130
Extractable Manganese (Mn)	mg/kg	1200	300	15000
Extractable Strontium (Sr)	mg/kg	4500	1125	56000
Extractable Tin (Sn)	mg/kg	15000	3750	180000
Extractable Zinc (Zn)	mg/kg	3750	938	46000
Extractable Copper (Cu)	mg/kg	622.5	156	7700
Extractable Aluminum (Al)	mg/kg	5625	1406	70000
Extractable Nickel (Ni)	mg/kg	75	18.8	930
Extractable Organic Tin	mg/kg	0.9	0.2	12

**Remark:** \* The Limited value is based on European Directive 2009/48/EC and its subsequent amendments and EN 71 Part 3:2013+A1:2014.

Category I: Dry, brittle, powder-like or pliable materials

Category II: Liquid or sticky materials

Category III: Scrapped-off materials

\*\*\*\*\* To be continued \*\*\*\*\*



## 4. Phthalates Content

**Test Method:** With reference to EPA3550C-2007&EPA8270D-2007, Analysis was performed by GC-MS.  
(4-1) For all toys and childcare articles

Test Item(s)	MDL (%)	Test Results (%)			Limited Value** (%)
		2# <sup>▲</sup>	3# <sup>▲</sup>	4# <sup>▲</sup>	
Dibutyl Phthalate((DBP)	0.005	N.D.	N.D.	N.D.	---
Benzylbutyl Phthalate(BBP)	0.005	N.D.	N.D.	N.D.	---
Di-(2-ethylhexyl)Phthalate(DEHP)	0.005	N.D.	N.D.	N.D.	---
Total (DBP+BBP+DEHP)	---	< 0.015	< 0.015	< 0.015	≤ 0.1

Test Item(s)	MDL (%)	Test Results (%)			Limited Value** (%)
		5# <sup>▲</sup>	6# <sup>▲</sup>	7# <sup>▲</sup>	
Dibutyl Phthalate((DBP)	0.005	N.D.	N.D.	N.D.	---
Benzylbutyl Phthalate(BBP)	0.005	N.D.	N.D.	N.D.	---
Di-(2-ethylhexyl)Phthalate(DEHP)	0.005	N.D.	N.D.	0.028	---
Total (DBP+BBP+DEHP)	---	< 0.015	< 0.015	0.028	≤ 0.1

(4-2) For toys and childcare articles that can be mouthed

Test Item(s)	MDL (%)	Test Results (%)			Limited Value** (%)
		2# <sup>▲</sup>	3# <sup>▲</sup>	4# <sup>▲</sup>	
Di-iso-nonylphthalate(DINP)	0.010	N.D.	N.D.	N.D.	---
Di-n-octylphthalate(DNOP)	0.005	N.D.	N.D.	N.D.	---
Di-iso-decylphthalate(DIDP)	0.010	N.D.	N.D.	N.D.	---
Total (DINP+DNOP+DIDP)	---	< 0.025	< 0.025	< 0.025	≤ 0.1

\*\*\*\*\* To be continued \*\*\*\*\*

# TEST REPORT

Reference No. : SZ2016110404-1E

Date : Dec. 12, 2016

Page No.: 10 of 12

Test Item(s)	MDL (%)	Test Results (%)			Limited Value** (%)
		5# <sup>▲</sup>	6# <sup>▲</sup>	7# <sup>▲</sup>	
Di-iso-nonylphthalate(DINP)	0.010	N.D.	N.D.	N.D.	---
Di-n-octylphthalate(DNOP)	0.005	N.D.	N.D.	N.D.	---
Di-iso-decylphthalate(DIDP)	0.010	N.D.	N.D.	N.D.	---
Total (DINP+DNOP+DIDP)	---	< 0.025	< 0.025	< 0.025	≤ 0.1

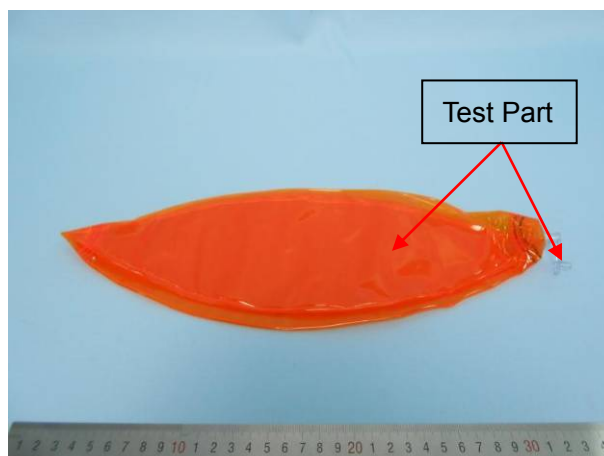
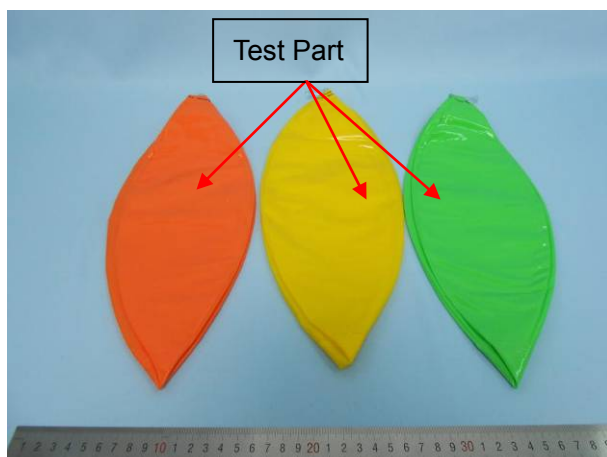
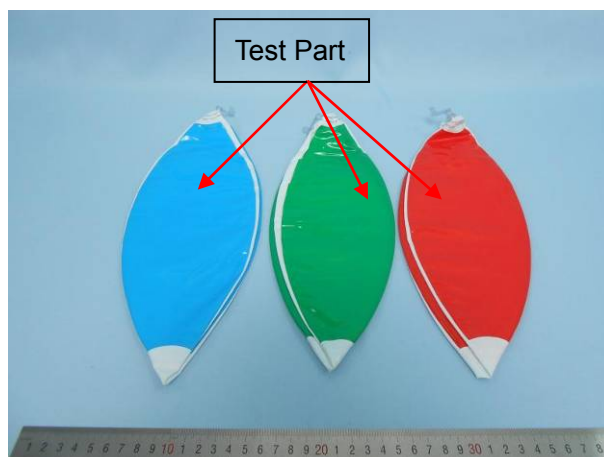
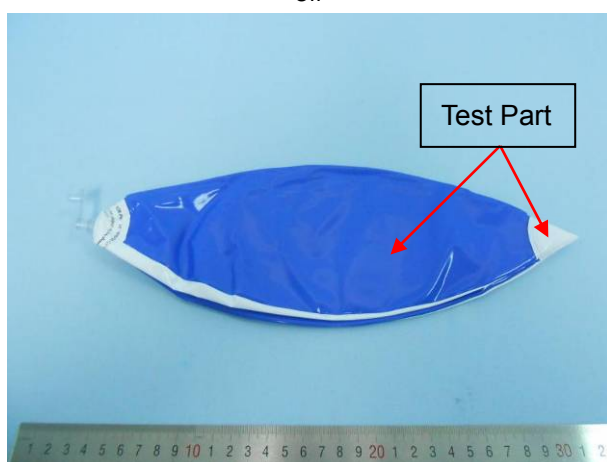
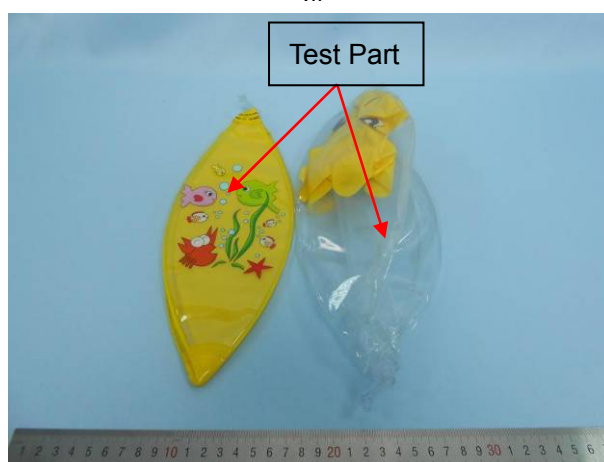
**Remark:** \*\*The Limited value is based on REACH Annex XVII (entry 51&52).

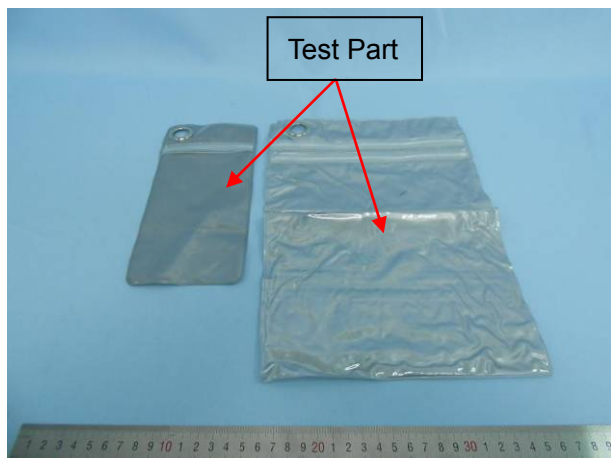
- Note :**
- 1) MDL = Method Detection Limit.
  - 2) N.D. = Not detected, less than MDL.
  - 3) "—" = Not Regulated.
  - 4) % = Percentage by weight.
  - 5) <sup>▲</sup>As the client required, the sample was tested in mixture.

## Test Part Description:

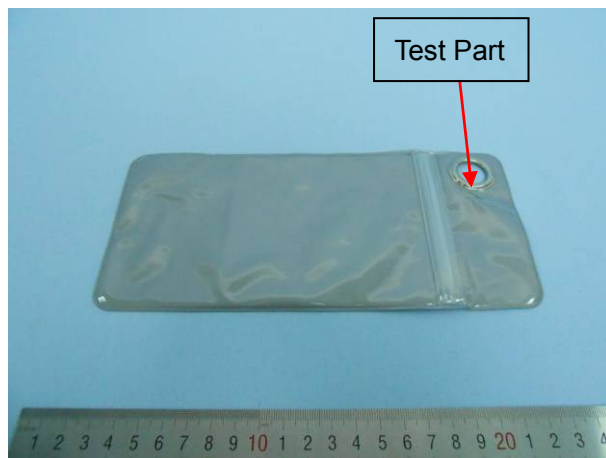
- 1# Inflatable ball + Inflatable armband + Inflatable pillow + phone pouch + tablet pouch
- 2# Orange transparent PVC + transparent PVC gas mouth
- 3# Orange PVC + yellow PVC + light green PVC
- 4# Light blue PVC + green PVC + red PVC
- 5# Dark blue PVC + white PVC
- 6# Yellow PVC with colored coating + transparent PVC
- 7# Grey PVC + transparent PVC + grey PVC
- 8# Silvery metal ring

\*\*\*\*\* To be continued \*\*\*\*\*

**SAMPLE PHOTOS****1#****2#****3#****4#****5#****6#**



7#



8#

\*\*\*\*\* END OF REPORT \*\*\*\*\*